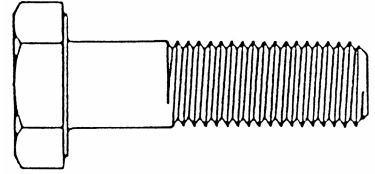




STELFAST[®] INC.

HEX HEAD CAP SCREWS GRADE 5 PLAIN & PLATED

U.N.C.



LENGTH UNDER HEAD	1/4 - 20		5/16 - 18		3/8 - 16		7/16 - 14	
	CTN QTY	LBS. PER 1000 PCS.	CTN QTY	LBS. PER 1000 PCS.	CTN QTY	LBS. PER 1000 PCS.	CTN QTY	LBS. PER 1000 PCS.
1/2	5000	12						
5/8	4800	13	2800	22				
3/4	4000	14	2600	24	1800	35		
7/8	4000	16	2400	26	1600	39	1200	55
1	3600	17	2200	28	1500	42	1100	59
1 1/4	2800	21	1800	34	1300	49	950	68
1 1/2	2400	24	1600	39	1000	56	750	78
1 3/4	1800	28	1300	45	950	64	650	89
2	1600	31	1200	50	800	72	600	99
2 1/4	1300	35	900	55	700	80	500	110
2 1/2	1300	38	900	61	650	87	450	121
2 3/4	900	42	750	66	600	95	450	131
3	900	45	700	71	500	103	400	142
3 1/4	800	48	600	77	425	111	400	152
3 1/2	750	52	600	82	400	119	300	163
3 3/4	700	55	500	88	325	126	275	174
4	700	59	450	93	325	134	250	184
4 1/2	600	66	400	103	300	150	225	205
5	600	73	300	114	300	165	175	226
5 1/2	600	80	300	125	300	181	175	248
6	600	86	300	136	300	196	175	269

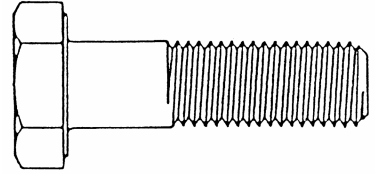
Quality, Price and Service, We Hold It All Together



STELFAST[®] INC.

HEX HEAD CAP SCREWS GRADE 5 PLAIN & PLATED

U.N.C.



LENGTH UNDER HEAD	1/2 - 13		5/8 - 11		3/4 - 10	
	CTN QTY	LBS. PER 1000 PCS.	CTN QTY	LBS. PER 1000 PCS.	CTN QTY	LBS. PER 1000 PCS.
7/8	800	87				
1	750	92	400	152	250	245
1 1/4	650	103	350	169	225	271
1 1/2	600	116	300	187	200	297
1 3/4	500	130	300	207	200	323
2	450	144	250	228	180	351
2 1/4	400	157	225	250	150	382
2 1/2	325	171	200	271	140	413
2 3/4	300	185	200	293	130	445
3	250	199	175	314	120	476
3 1/4	250	213	150	336	110	507
3 1/2	250	226	150	358	100	538
3 3/4	200	240	125	379	90	569
4	200	254	125	400	85	600
4 1/2	175	282	100	444	80	662
5	150	309	90	487	65	724
5 1/2	150	337	75	530	60	787
6	150	364	75	573	60	849
7	150	420	90	659	60	950
8	125	475	80	745	50	1045
9	110	530	70	832	50	1195
10	100	585	65	918	45	1329
11					40	1470
12	90	676	55	1070	40	1580
13			30	1175	20	1716
14			30	1261	20	1841
15			30	1346	20	1965

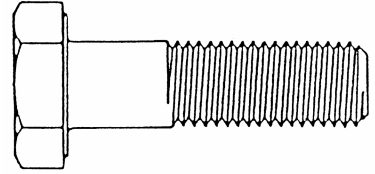
Quality, Price and Service, We Hold It All Together



STELFAST® INC.

HEX HEAD CAP SCREWS GRADE 5 PLAIN & PLATED

U.N.C.



LENGTH UNDER HEAD	7/8-9		1-8	
	CTN QTY	LBS. PER 1000 PCS.	CTN QTY	LBS. PER 1000 PCS.
2	120	511	80	701
2 1/4	100	550	80	748
2 1/2	100	592	76	799
2 3/4	90	634	65	854
3	80	677	65	910
3 1/4	80	719	60	965
3 1/2	70	761	55	1020
3 3/4	70	803	50	1175
4	60	846	50	1130
4 1/2	60	930	40	1241
5	50	1015	40	1351
5 1/2	45	1100	40	1462
6	45	1184	35	1572
6 1/2	40	1269	35	1682
7	40	1353	30	1793
7 1/2	40	1438	30	1903
8	35	1523	30	2014
8 1/2	35	1607	30	2124
9	30	1692	25	2234
9 1/2	30	1771	25	2345
10	30	1861	25	2455
12	25	2170	15	2880

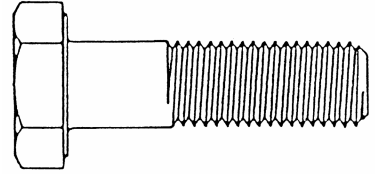
Quality, Price and Service, We Hold It All Together



STELFAST[®] INC.

HEX HEAD CAP SCREWS GRADE 5 PLAIN & PLATED

U.N.C.



LENGTH UNDER HEAD	1 1/8 - 7		1 1/4 - 7		1 1/2 - 6	
	CTN QTY	LBS. PER 1000 PCS.	CTN QTY	LBS. PER 1000 PCS.	CTN QTY	LBS. PER 1000 PCS.
3	50	1193	40	1540		
3 1/2	40	1400	35	1717		
4	40	1480	30	1900	20	2940
4 1/2	35	1620	30	2100	15	3150
5	35	1800	30	2235	15	3399
5 1/2	30	1900	25	2408	15	3650
6	30	2035	20	2583	15	3916
6 1/2	30	2180	20	2780	15	4130
7	25	2321	15	2950	15	4389
7 1/2	25	2450	15	3110	15	4690
8	25	2592	15	3280	15	4870
9	20	2860	15	3621	15	5383
10	20	3131	15	4000	15	5883
11	20	3400	15	4300	10	6420
12	15	3680	10	4620	10	6920

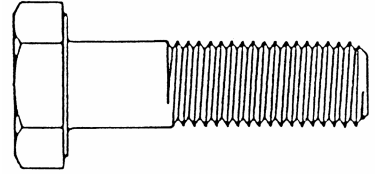
Quality, Price and Service, We Hold It All Together



STELFAST[®] INC.

HEX HEAD CAP SCREWS GRADE 8 PLATED

U.N.C.



LENGTH UNDER HEAD	1/4 - 20		5/16 - 18		3/8 - 16	
	CTN QTY	LBS. PER 1000 PCS.	CTN QTY	LBS. PER 1000 PCS.	CTN QTY	LBS. PER 1000 PCS.
1	3600	17	2200	28	1500	42
1 1/4	2800	21	1800	34	1300	49
1 1/2	2400	24	1600	39	1000	56
1 3/4	1800	28	1300	45	950	64
2	1600	31	1200	50	800	72
2 1/4	1300	35	900	55	700	80
2 1/2	1300	38	900	61	650	87
2 3/4	900	42	750	66	600	95
3	900	45	700	71	500	103
3 1/4	800	48	600	77	425	111
3 1/2	750	52	600	82	400	119
3 3/4	700	55	500	88	325	126
4	700	59	450	93	325	134
4 1/2	600	66	400	103	300	150
5	600	73	300	114	300	165
5 1/2	600	80	300	125	300	181
6	600	86	300	136	300	196

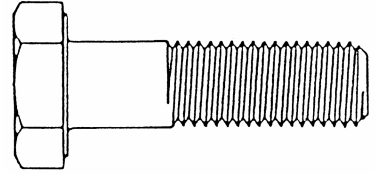
Quality, Price and Service, We Hold It All Together



STELFAST[®] INC.

HEX HEAD CAP SCREWS GRADE 8 PLATED

U.N.C.



LENGTH UNDER HEAD	1/2 - 13		5/8 - 11		3/4 - 10	
	CTN QTY	LBS. PER 1000 PCS.	CTN QTY	LBS. PER 1000 PCS.	CTN QTY	LBS. PER 1000 PCS.
1	750	92	400	152		
1 1/4	650	103	350	169	225	271
1 1/2	600	116	300	187	200	297
1 3/4	500	130	300	207	200	323
2	450	144	250	228	180	351
2 1/4	400	157	225	250	150	382
2 1/2	325	171	200	271	140	413
2 3/4	300	185	200	293	130	445
3	250	199	175	314	120	476
3 1/4	250	213	150	336	110	507
3 1/2	250	226	150	358	100	538
3 3/4	200	240	125	379	90	569
4	200	254	125	400	85	600
4 1/2	175	282	100	444	80	662
5	150	309	90	487	65	724
5 1/2	150	337	75	530	60	787
6	150	364	75	573	60	849

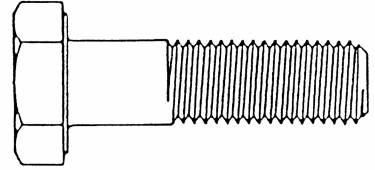
Quality, Price and Service, We Hold It All Together



STELFAST[®] INC.

HEX HEAD CAP SCREWS GRADE 2 PLAIN & ZINC PLATED

U.N.C.



LENGTH UNDER HEAD	1/4 - 20		5/16 - 18		3/8 - 16		7/16 - 14	
	CTN QTY	LBS. PER 1000 PCS.	CTN QTY	LBS. PER 1000 PCS.	CTN QTY	LBS. PER 1000 PCS.	CTN QTY	LBS. PER 1000 PCS.
1/2	5000	12						
5/8	4800	13	2800	22				
3/4	4000	14	2600	24	1800	51		
7/8	4000	16	2400	26	1600	39	1200	55
1	3600	17	2200	28	1500	42	1100	59
1 1/4	2800	21	1800	34	1300	49	950	68
1 1/2	2400	24	1600	39	1000	56	750	78
1 3/4	1800	28	1300	45	950	64	650	89
2	1600	31	1200	50	800	72	600	99
2 1/4	1300	35	900	55	700	80	500	110
2 1/2	1300	38	900	61	650	87	450	121
2 3/4	900	42	750	66	600	95	450	131
3	900	45	700	71	500	103	400	142
3 1/4	800	48	600	77	425	111	400	152
3 1/2	750	52	600	82	400	119	300	163
3 3/4	700	55	500	88	325	126	275	174
4	700	59	450	93	325	134	250	184
4 1/2	600	66	400	103	300	150	225	205
5	600	73	300	114	300	165	175	226
5 1/2	600	80	300	125	300	181	175	248
6	600	86	300	136	300	196	175	269

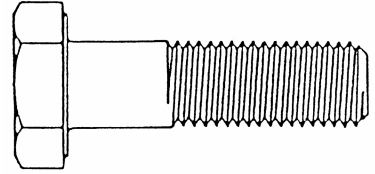
Quality, Price and Service, We Hold It All Together



STELFAST[®] INC.

HEX HEAD CAP SCREWS GRADE 2 PLAIN & ZINC PLATED

U.N.C.



LENGTH UNDER HEAD	1/2 - 13		5/8 - 11		3/4 - 10	
	CTN QTY	LBS. PER 1000 PCS.	CTN QTY	LBS. PER 1000 PCS.	CTN QTY	LBS. PER 1000 PCS.
7/8	800	87				
1	750	92	400	152	250	245
1 1/4	650	103	350	169	225	271
1 1/2	600	116	300	187	200	297
1 3/4	500	130	300	207	200	323
2	450	144	250	228	180	351
2 1/4	400	157	225	250	150	382
2 1/2	325	171	200	271	140	413
2 3/4	300	185	200	293	130	445
3	250	199	175	314	120	476
3 1/4	250	213	150	336	110	507
3 1/2	250	226	150	358	100	538
3 3/4	200	240	125	379	90	569
4	200	254	125	400	85	600
4 1/2	175	282	100	444	80	662
5	150	309	90	487	65	724
5 1/2	150	337	75	530	60	787
6	150	364	75	573	60	849

Quality, Price and Service, We Hold It All Together



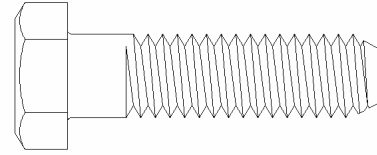
STELFAST® INC.

HEX HEAD MACHINE BOLTS

A307

PLAIN, PLATED & GALVANIZED

U.N.C.



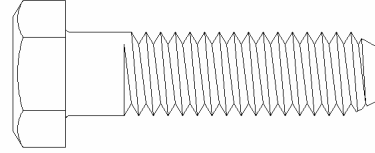
LENGTH UNDER HEAD	1/4 - 20		5/16 - 18		3/8 - 16		7/16 - 14	
	CTN QTY	LBS. PER 1000 PCS.	CTN QTY	LBS. PER 1000 PCS.	CTN QTY	LBS. PER 1000 PCS.	CTN QTY	LBS. PER 1000 PCS.
1/2	5000	12						
5/8	4800	13						
3/4	4000	14	2600	24	1800	35	1200	51
7/8	4000	16	2400	26	1600	39	1200	55
1	3600	17	2200	28	1500	42	1100	59
1 1/4	2800	21	1800	34	1300	49	950	68
1 1/2	2400	24	1600	39	1000	56	750	78
1 3/4	1800	28	1300	45	950	64	650	89
2	1600	31	1200	50	800	72	600	99
2 1/4	1300	35	900	55	700	80	500	110
2 1/2	1300	38	900	61	650	87	450	121
2 3/4	900	42	750	66	600	95	450	131
3	900	45	700	71	500	103	400	142
3 1/4	800	48	600	77	425	111	400	152
3 1/2	750	52	600	82	400	119	300	163
3 3/4	700	55	500	88	325	126	275	174
4	700	59	450	93	325	134	250	184
4 1/2	600	66	400	103	300	150	225	205
5	600	73	300	114	300	165	175	226
5 1/2	600	80	300	125	300	181	175	248
6	600	86	300	136	300	196	175	269
7					200	225		
8					200	255		
9					160	285		
10					150	316		

Quality, Price and Service, We Hold It All Together



STELFAST[®] INC.

HEX HEAD MACHINE BOLTS A307 PLAIN - PLATED & GALVANIZED U.N.C



LENGTH UNDER HEAD	1/2 - 13		5/8 - 11		3/4 - 10	
	CTN QTY	LBS. PER 1000 PCS.	CTN QTY	LBS. PER 1000 PCS.	CTN QTY	LBS. PER 1000 PCS.
1	750	92	400	152	250	245
1 1/4	650	103	350	169	225	271
1 1/2	600	116	300	187	200	297
1 3/4	500	130	300	207	200	323
2	450	144	250	228	180	351
2 1/4	400	157	225	250	150	382
2 1/2	325	171	200	271	140	413
2 3/4	300	185	200	293	130	445
3	250	199	175	314	120	476
3 1/4	250	213	150	336	110	507
3 1/2	250	226	150	358	100	538
3 3/4	200	240	125	379	90	569
4	200	254	125	400	85	600
4 1/2	175	282	100	444	80	662
5	150	309	90	487	65	724
5 1/2	150	337	75	530	60	787
6	150	364	75	573	60	849
7	150	409	70	658	60	969
8	125	461	60	741	50	1065
9	100	515	60	824	50	1210
10	90	570	55	908	50	1330
11	75	623	50	991	35	1450
12	70	676	40	1070	30	1580
13	60	730	40	1150	30	1700
14	55	784	40	1230	25	1820
15	55	838	35	1320	25	1940
16	50	892	35	1400	25	2060
18	35	996	25	1570	20	2300

Quality, Price and Service, We Hold It All Together



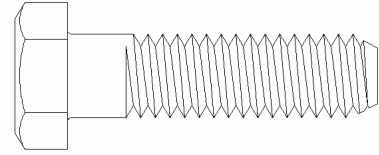
STELFAST® INC.

HEX HEAD MACHINE BOLTS

A307

PLAIN, PLATED & GALVANIZED

U.N.C.



LENGTH UNDER HEAD	7/8-9		1-8	
	CTN QTY	LBS. PER 1000 PCS.	CTN QTY	LBS. PER 1000 PCS.
1 3/4			90	655
2	120	511	80	701
2 1/4	100	550	80	748
2 1/2	100	592	76	799
2 3/4	90	634	65	854
3	80	677	65	910
3 1/4	80	719	60	965
3 1/2	70	761	55	1020
3 3/4	70	803	50	1175
4	60	846	50	1130
4 1/2	60	930	40	1241
5	50	1015	40	1351
5 1/2	45	1100	40	1462
6	45	1184	35	1572
6 1/2	40	1269	35	1682
7	40	1353	30	1793
7 1/2	40	1438	30	1903
8	35	1523	30	2014
8 1/2	35	1607	30	2124
9	30	1692	25	2234
9 1/2	30	1771	25	2345
10	30	1861	25	2455
12	25	2170	15	2880
13	20	2340	15	3090

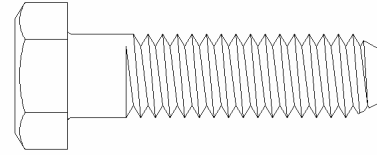
Quality, Price and Service, We Hold It All Together



STELFAST[®] INC.

**HEX MACHINE BOLTS
HEAVY HEAD A307 GRADE B
PLAIN**

U.N.C.



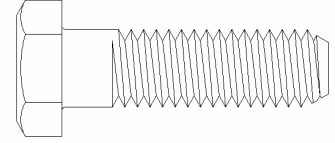
LENGTH UNDER HEAD	1/2 - 13		5/8 - 11		3/4 - 10		7/8 - 9	
	CTN QTY	LBS. PER 1000 PCS.	CTN QTY	LBS. PER 1000 PCS.	CTN QTY	LBS. PER 1000 PCS.	CTN QTY	LBS. PER 1000 PCS.
1 1/2	500	128	300	217				
1 3/4	425	141	275	235	150	365		
2	400	155	250	256	150	390	100	566
2 1/4	325	168	200	277	135	420		
2 1/2	300	182	175	298	120	450	90	642
2 3/4	250	195	150	319	100	481		
3	250	209	150	340	100	511	240	724
3 1/4			140	360	85	541		
3 1/2			130	381	85	570	60	807
3 3/4			120	402	75	601	45	848
4			120	423	75	632	45	889
4 1/2					60	692	45	980
5					60	752		
5 1/2					60	813		
6					60	873		

Quality, Price and Service, We Hold It All Together



STELFAST[®] INC.

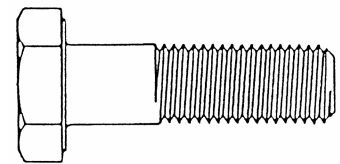
HEX MACHINE BOLTS HEAVY HEAD A307 GRADE B PLAIN



U.N.C.

LENGTH UNDER HEAD	1 - 8		1 1/8 - 7		1 1/4 - 7	
	CTN QTY	LBS. PER 1000 PCS.	CTN QTY	LBS. PER 1000 PCS.	CTN QTY	LBS. PER 1000 PCS.
2 1/2	80	880				
3	50	990	40	1280	35	1670
3 1/2	50	1100	40	1410	35	1830
3 3/4	45	1150				
4	45	1200	40	1550	30	2000
4 1/2	35	1310	35	1680	30	2170
5	35	1420	30	1820	25	2340
5 1/2	25	1530	25	1960	25	2510
6	25	1630	25	2090	20	2670
7			25	2350	20	3000
8			20	2630	18	3330

A325 STRUCTURAL BOLTS PLAIN & GALVANIZED



U.N.C.

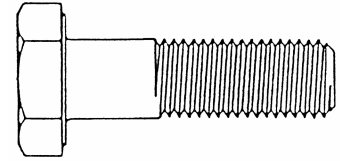
LENGTH UNDER HEAD	5/8		3/4	
	CTN QTY	LBS. PER 1000 PCS.	CTN QTY	LBS. PER 1000 PCS.
1 1/2			650	328
1 3/4	900	235	650	360
2	875	256	550	391
2 1/4	775	277	525	423
2 1/2	725	298	475	454
2 3/4	650	319	425	485
3	600	340	400	516

Quality, Price and Service, We Hold It All Together



STELFAST[®] INC.

HEAVY HEX BOLTS A193 GRADE B7 PLAIN



U.N.C. & U.N.

LENGTH UNDER HEAD	1/2 - 13		5/8 - 11		3/4 - 10		7/8 - 9	
	CTN QTY	LBS. PER 1000 PCS.	CTN QTY	LBS. PER 1000 PCS.	CTN QTY	LBS. PER 1000 PCS.	CTN QTY	LBS. PER 1000 PCS.
1	2000	106						
1 1/4	1700	117	950	200				
1 1/2	1500	128	850	217	550	339		
1 3/4	1300	144	800	235	510	365		
2	1200	155	750	256	450	396	320	566
2 1/4	1100	168	700	277	430	420	300	601
2 1/2	1050	182	650	298	400	450	270	642
2 3/4	950	195	600	319	370	481	260	683
3	900	209	550	340	350	511	240	724
3 1/4	850	222	500	360	330	541	230	766
3 1/2	800	236	450	381	310	570	220	807
3 3/4	750	249	450	402	300	601	210	848
4	700	262	430	437	280	632	200	889
4 1/4	700	276	410	444	260	662	190	930
4 1/2	650	289	400	465	250	962	180	980
4 3/4	650	303	380	486	240	722	170	1020
5	600	316	350	507	230	752	165	1060
5 1/2	600	80	320	549	210	813	150	1140
6	600	86	300	591	200	873	140	1220

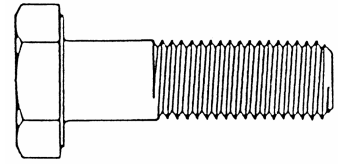
Quality, Price and Service, We Hold It All Together



STELFAST[®] INC.

HEAVY HEX BOLTS A193 GRADE B7 PLAIN

U.N.C. & U.N.



LENGTH UNDER HEAD	1 - 8		1 1/8 - 8		1 1/4 - 8	
	CTN QTY	LBS. PER 1000 PCS.	CTN QTY	LBS. PER 1000 PCS.	CTN QTY	LBS. PER 1000 PCS.
2	230	788				
2 1/4	220	834				
2 1/2	200	880				
2 3/4	190	940	150	1210		
3	180	990	150	1280	100	1670
3 1/4	170	1040	125	1340	100	1750
3 1/2	160	1100	125	1410	100	1830
3 3/4	150	1050	125	1480	100	1920
4	150	1200	125	1550	100	2000
4 1/4	140	1260	100	1620	75	2090
4 1/2	135	1310	100	1680	75	2170
4 3/4	130	1370	100	1750	75	2250
5	125	1420	100	1820	75	2340
5 1/2	115	1530	100	1960	75	2510
6	105	1630	75	2090	75	2670
6 1/2			75	2222		
7			75	2350		
8			75	2630		

Quality, Price and Service, We Hold It All Together



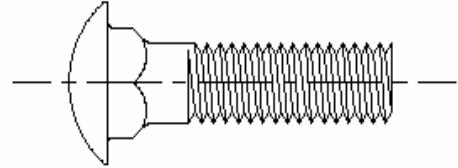
STELFAST[®] INC.

CARRIAGE BOLTS ROUND HEAD - SQUARE NECK

A307

PLAIN, ZINC PLATED & HDG

U.N.C



LENGTH UNDER HEAD	1/4		5/16		3/8	
	CTN QTY	LBS. PER 1000 PCS.	CTN QTY	LBS. PER 1000 PCS.	CTN QTY	LBS. PER 1000 PCS.
1/2	3400	12				
5/8	3500	13				
3/4	3600	14	2400	24	1600	38
1	3000	17	1600	28	1400	44
1 1/4	2500	20	1300	32	1000	50
1 1/2	1800	23	1100	37	800	56
1 3/4	1800	26	1000	43	750	64
2	1400	30	850	48	700	71
2 1/4	1200	33	800	53	600	79
2 1/2	1100	36	650	58	500	87
2 3/4	1000	40	600	64	450	94
3	900	43	600	69	400	102
3 1/4					350	110
3 1/2	800	50	500	79	325	117
4	700	57	425	90	300	132
4 1/2	650	63	375	101	275	148
5	600	70	350	111	250	163
5 1/2	550	77	325	122	225	178
6	500	84	300	132	200	193
6 1/2					200	208
7					200	222
8			300	194	200	252
9			300	229	175	283
10					160	313
11					150	343
12					135	374

Quality, Price and Service, We Hold It All Together



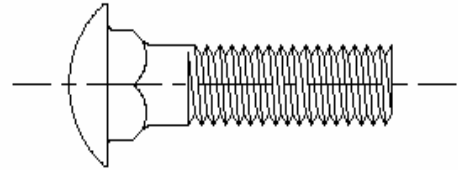
STELFAST[®] INC.

CARRIAGE BOLTS ROUND HEAD - SQUARE NECK

A307

PLAIN, ZINC PLATED & HDG

U.N.C



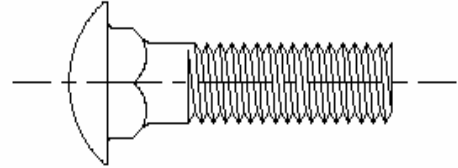
LENGTH UNDER HEAD	7/16		1/2		5/8		3/4	
	CTN QTY	LBS. PER 1000 PCS.	CTN QTY	LBS. PER 1000 PCS.	CTN QTY	LBS. PER 1000 PCS.	CTN QTY	LBS. PER 1000 PCS.
1	800	63	650	86				
1 1/4	700	72	600	97				
1 1/2	600	80	500	108	300	183	175	284
1 3/4	550	88	425	119	275	201		
2	450	99	400	132	250	218	150	337
2 1/4	400	109	325	146	200	238		
2 1/2	350	120	300	159	175	259	120	390
2 3/4	325	130	250	173	150	280		
3	300	140	250	186	150	301	100	451
3 1/2	250	161	200	231	130	343	85	511
4	250	182	175	240	120	385	75	571
4 1/2	225	202	150	267	100	427	60	632
5	225	223	125	294	75	468	60	692
5 1/2	200	243	125	321	75	510	60	753
6	175	264	125	347	75	552	60	813
6 1/2			100	372	75	591	60	868
7			100	399	75	633	60	929
7 1/2			100	426	75	674	50	989
8			100	453	75	716	50	1050
9			100	506	60	800	45	1170
10			90	560	50	884	40	1300
11			80	614				
12			75	668	45	1052	35	1560
13			70	722				
14			65	775	40	1220	25	1780
16					25	1400	25	2020
18					25	1550	25	2226
20					25	1720	20	2500

Quality, Price and Service, We Hold It All Together



STELFAST[®] INC.

CARRIAGE BOLTS
GRADE 5
ROUND HEAD - SQUARE NECK
ZINC PLATED **U.N.C.**



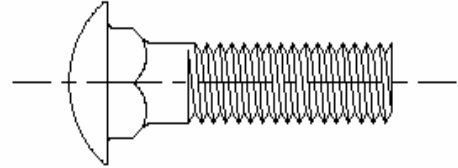
LENGTH UNDER HEAD	1/4		5/16		3/8	
	CTN QTY	LBS. PER 1000 PCS.	CTN QTY	LBS. PER 1000 PCS.	CTN QTY	LBS. PER 1000 PCS.
1/2	3400	12				
3/4	3600	14				
1	3000	17	1600	28	1400	44
1 1/4	2500	20	1300	32	1000	50
1 1/2	1800	23	1100	37	800	56
2	1400	30	850	48	700	71
2 1/2	1100	36	650	58	500	87
3	900	43	600	69	400	102
3 1/2					325	117
4					300	132
4 1/2					275	148
5					250	163
6					200	193

Quality, Price and Service, We Hold It All Together



STELFAST[®] INC.

CARRIAGE BOLTS
GRADE 5
ROUND HEAD - SQUARE NECK
ZINC PLATED **U.N.C.**



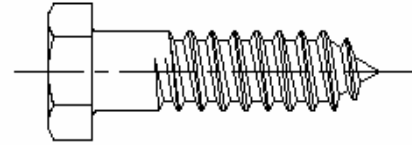
LENGTH UNDER HEAD	1/2		5/8		3/4	
	CTN QTY	LBS. PER 1000 PCS.	CTN QTY	LBS. PER 1000 PCS.	CTN QTY	LBS. PER 1000 PCS.
1 1/2	500	108				
2	400	132	250	218		
2 1/2	300	159	175	259		
3	250	186	150	301	100	451
3 1/2	200	231	130	343	85	511
4	175	240	120	385	75	571
4 1/2	150	267	100	427	60	632
5	125	294	75	468	60	692
5 1/2	125	321			60	753
6	125	347	75	552	60	813

Quality, Price and Service, We Hold It All Together



STELFAST[®] INC.

HEX HEAD LAG BOLTS PLAIN, ZINC PLATED & GALVANIZED



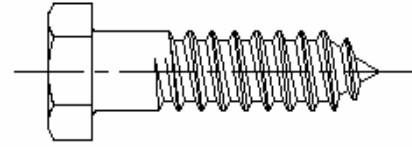
LENGTH UNDER HEAD	1/4		5/16		3/8	
	CTN QTY	LBS. PER 1000 PCS.	CTN QTY	LBS. PER 1000 PCS.	CTN QTY	LBS. PER 1000 PCS.
1	3000	15	1600	28		
1 1/4	2500	18	1300	33	1000	47
1 1/2	1800	21	1100	37	800	53
1 3/4	1800	24	1000	41	750	59
2	1400	27	850	46	700	66
2 1/2	1100	32	650	55	500	78
3	900	38	600	64	400	91
3 1/2	800	43	500	72	325	104
4	700	49	425	81	300	116
4 1/2	650	55	375	90	275	129
5	600	60	350	99	250	141
5 1/2					225	154
6	500	71	300	116	225	166
7					175	191
8					150	216
10					150	271
12					100	316

Quality, Price and Service, We Hold It All Together



STELFAST[®] INC.

HEX HEAD LAG BOLTS PLAIN, ZINC PLATED & GALVANIZED



LENGTH UNDER HEAD	1/2		5/8		3/4	
	CTN QTY	LBS. PER 1000 PCS.	CTN QTY	LBS. PER 1000 PCS.	CTN QTY	LBS. PER 1000 PCS.
1 3/4	425	121				
2	400	133	250	232		
2 1/2	300	155	175	268		
3	250	178	150	304		
3 1/2	200	200	130	340		
4	175	223	120	376	75	575
4 1/2	150	246	100	412	60	628
5	125	269	75	447	60	680
5 1/2	125	297	75	483	60	732
6	125	314	75	519	60	784
6 1/2			75	554		
7	100	359	75	590	50	889
7 1/2			65	626		
8	100	405	65	662	50	993
8 1/2			65	698		
9	100	450	60	734	45	1100
9 1/2			60	770		
10	90	495	50	806	40	1200
11	80	540	50	878	40	1310
12	75	585	50	950	35	1410

Quality, Price and Service, We Hold It All Together



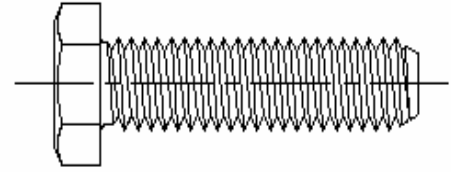
STELFAST[®] INC.

HEX HEAD TAP BOLTS

A307

ZINC PLATED

U.N.C.



LENGTH UNDER HEAD	1/4 - 20		5/16 - 18		3/8 - 16		7/16 - 14	
	CTN QTY	LBS. PER 1000 PCS.	CTN QTY	LBS. PER 1000 PCS.	CTN QTY	LBS. PER 1000 PCS.	CTN QTY	LBS. PER 1000 PCS.
1/2	5000	12						
5/8	4800	13						
3/4	4000	14						
7/8	4000	16						
1	3600	17	2200	28	1500	42	1100	59
1 1/4	2800	21	1800	34	1300	49	950	68
1 1/2	2400	24	1600	39	1000	56	750	78
1 3/4	1800	28	1300	45	950	64	650	89
2	1600	31	1200	50	800	72	600	99
2 1/4	1300	35	900	55	700	80	500	110
2 1/2	1300	38	900	61	650	87	450	121
2 3/4	900	42	750	66	600	95	450	131
3	900	45	700	71	500	103	400	142
3 1/4	800	48	600	77	425	111		
3 1/2	750	52	600	82	400	119	300	163
3 3/4	700	55	500	88	325	126		
4	700	59	450	93	325	134	250	184
4 1/2	600	66	400	103	300	150	225	205
5	600	73	300	114	300	165	175	226
5 1/2	600	80	300	125	300	181	175	248
6	600	86	300	136	300	196	175	269

Quality, Price and Service, We Hold It All Together



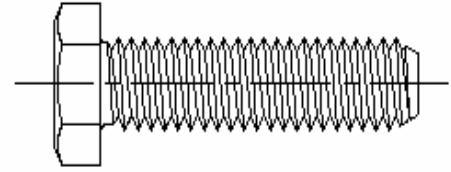
STELFAST® INC.

HEX HEAD TAP BOLTS

A307

ZINC PLATED

U.N.C.



LENGTH UNDER HEAD	1/2 - 13		5/8 - 11		3/4 - 10	
	CTN QTY	LBS. PER 1000 PCS.	CTN QTY	LBS. PER 1000 PCS.	CTN QTY	LBS. PER 1000 PCS.
1 1/4	650	103	350	169		
1 1/2	600	116	300	187	200	297
1 3/4	500	130	300	207	200	323
2	450	144	250	228	180	351
2 1/4	400	157	225	250	150	382
2 1/2	325	171	200	271	140	413
2 3/4	300	185	200	293	130	445
3	250	199	175	314	120	476
3 1/4	250	213	150	336	110	507
3 1/2	250	226	150	358	100	538
3 3/4	200	240	125	379	90	569
4	200	254	125	400	85	600
4 1/2	175	282	100	444	80	662
5	150	309	90	487	65	724
5 1/2	150	337	75	530	60	787
6	150	364	75	573	60	849

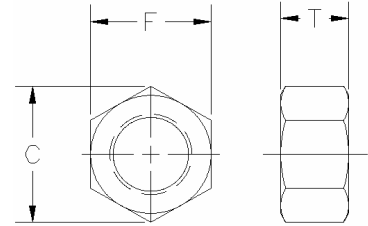
Quality, Price and Service, We Hold It All Together



STELFAST[®] INC.

FINISHED HEX NUTS GRADES 2 - 5 - 8 PLAIN & PLATED

U.N.C.



SIZE	WIDTH ACROSS FLATS (F)	WIDTH ACROSS CORNERS (C)	THICKNESS (T)	LBS. PER 1000 PCS.	CARTON QUANTITY
1/4 - 20	7/16	1/2	7/32	7.4	9000
5/16 - 18	1/2	9/16	17/64	11	6000
3/8 - 16	9/16	41/64	21/64	16	3000
7/16 - 14	11/16	25/32	3/8	28	2000
1/2 - 13	3/4	27/32	7/16	37	1500
9/16 - 12	7/8	1	31/64	58	1000
5/8 - 11	15/16	1 1/16	35/64	73	800
3/4 - 10	1 1/8	1 9/32	41/64	119	500
7/8 - 9	1 5/16	1 31/64	3/4	190	300
1 - 8	1 1/2	1 11/16	55/64	283	200
1 1/8 - 7	1 11/16	1 29/32	31/32	403	135
1 1/4 - 7	1 7/8	2 1/8	1 1/16	543	100
1 3/8 - 6	2 1/16	2 5/16	1 11/64	730	80
1 1/2 - 6	2 1/4	2 17/32	1 9/32	943	60
1 5/8 - 5 1/2	2 7/16	2 3/4	1 25/64	1170	50
1 3/4 - 5	2 5/8	3 1/64	1 1/2	1510	35
1 7/8 - 5	2 3/4	3 11/64	1 3/4	2040	25
2 - 4 1/2	3	3 7/16	1 23/32	2240	25
2 1/4 - 4 1/2	3 3/8	3 57/64	1 59/64	3170	15
2 1/2 - 4	3 3/4	4 5/16	2 9/64	4350	10
2 3/4 - 4	4 1/8	4 3/4	2 23/64	5730	10
3 - 4	4 1/2	5 3/16	2 37/64	7400	8

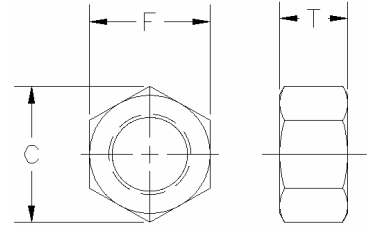
Quality, Price and Service, We Hold It All Together



STELFAST[®] INC.

FINISHED HEX NUTS GRADES 2 - 5 - 8 PLAIN & PLATED

U.N.F.



SIZE	WIDTH ACROSS FLATS (F)	WIDTH ACROSS CORNERS (C)	THICKNESS (T)	LBS. PER 1000 PCS.	CARTON QUANTITY
1/4 - 28	7/16	1/2	7/32	7.4	9000
5/16 - 24	1/2	9/16	17/64	11	6000
3/8 - 24	9/16	41/64	21/64	16	3000
7/16 - 20	11/16	25/32	3/8	28	2000
1/2 - 20	3/4	27/32	7/16	37	1500
9/16 - 18	7/8	1	31/64	58	1000
5/8 - 18	15/16	1 1/16	35/64	73	800
3/4 - 16	1 1/8	1 9/32	41/64	119	500
7/8 - 14	1 5/16	1 31/64	3/4	190	300
1 - 14	1 1/2	1 11/16	55/64	283	200
1 1/8 - 12	1 11/16	1 29/32	31/32	403	135
1 1/4 - 12	1 7/8	2 1/8	1 1/16	543	100
1 3/8 - 12	2 1/16	2 5/16	1 11/64	730	80
1 1/2 - 12	2 1/4	2 17/32	1 9/32	943	60
1 5/8 - 12	2 7/16	2 3/4	1 25/64	1170	50
1 3/4 - 12	2 5/8	3 1/64	1 1/2	1510	35
1 7/8 - 12	2 3/4	3 11/64	1 3/4	2040	25
2 - 12	3	3 7/16	1 23/32	2240	25
2 1/4 - 12	3 3/8	3 57/64	1 59/64	3170	15
2 1/2 - 12	3 3/4	4 5/16	2 9/64	4350	10
2 3/4 - 12	4 1/8	4 3/4	2 23/64	5730	10
3 - 12	4 1/2	5 3/16	2 37/64	7400	8

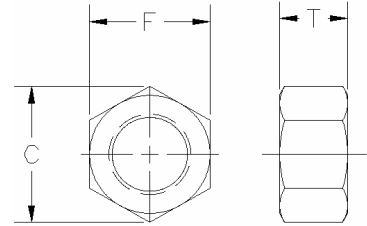
Quality, Price and Service, We Hold It All Together



STELFAST[®] INC.

FINISHED HEX NUTS
GRADE 2
GALVANIZED & TAPPED OVERSIZE

U.N.C.



SIZE	WIDTH ACROSS FLATS (F)	WIDTH ACROSS CORNERS (C)	THICKNESS (T)	LBS. PER 1000 PCS.	CARTON QUANTITY
1/4 - 20	7/16	1/2	7/32	7.4	9000
5/16 - 18	1/2	9/16	17/64	11	6000
3/8 - 16	9/16	41/64	21/64	16	3000
7/16 - 14	11/16	25/32	3/8	28	2000
1/2 - 13	3/4	27/32	7/16	37	1500
9/16 - 12	7/8	1	31/64	58	1000
5/8 - 11	15/16	1 1/16	35/64	73	800
3/4 - 10	1 1/8	1 9/32	41/64	119	500
7/8 - 9	1 5/16	1 31/64	3/4	190	300
1 - 8	1 1/2	1 11/16	55/64	283	200
1 1/8 - 7	1 11/16	1 29/32	31/32	403	130
1 1/4 - 7	1 7/8	2 1/8	1 1/16	543	100
1 3/8 - 6	2 1/16	2 5/16	1 11/64	730	65
1 1/2 - 6	2 1/4	2 17/32	1 9/32	943	55
1 5/8 - 5 1/2	2 7/16	2 3/4	1 25/64	1170	40
1 3/4 - 5	2 5/8	3 1/64	1 1/2	1510	35
1 7/8	2 3/4	3 11/64	1 3/4	2040	25
2 - 4 1/2	3	3 7/16	1 23/32	2240	25
2 1/4 - 4 1/2	3 3/8	3 57/64	1 59/64	3170	16
2 1/2 - 4	3 3/4	4 5/16	2 9/64	4350	14
2 3/4 - 4	4 1/8	4 3/4	2 23/64	5730	12
3 - 4	4 1/2	5 3/16	2 37/64	7400	10

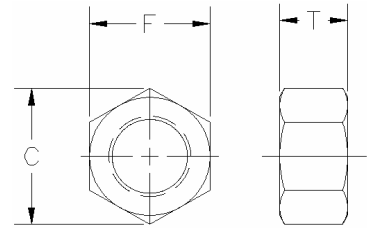
Quality, Price and Service, We Hold It All Together



STELFAST[®] INC.

FINISHED HEX NUTS
GRADE 5
GALVANIZED & TAPPED OVERSIZE

U.N.C.



SIZE	WIDTH ACROSS FLATS (F)	WIDTH ACROSS CORNERS (C)	THICKNESS (T)	LBS. PER 1000 PCS.	CARTON QUANTITY
1/4 - 20	7/16	1/2	7/32	7.4	9000
5/16 - 18	1/2	9/16	17/64	11	6000
3/8 - 16	9/16	41/64	21/64	16	3000
7/16 - 14	11/16	25/32	3/8	28	2000
1/2 - 13	3/4	27/32	7/16	37	1500
9/16 - 12	7/8	1	31/64	58	1000
5/8 - 11	15/16	1 1/16	35/64	73	800
3/4 - 10	1 1/8	1 9/32	41/64	119	500
7/8 - 9	1 5/16	1 31/64	3/4	190	300
1 - 8	1 1/2	1 11/16	55/64	283	200
1 1/8 - 7	1 11/16	1 29/32	31/32	403	130
1 1/4 - 7	1 7/8	2 1/8	1 1/16	543	100
1 3/8 - 6	2 1/16	2 5/16	1 11/16	730	80
1 1/2 - 6	2 1/4	2 17/32	1 9/32	943	60

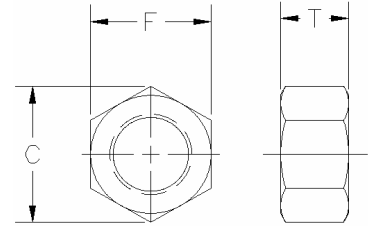
Quality, Price and Service, We Hold It All Together



STELFAST[®] INC.

FINISHED HEX NUTS GRADE 2 LEFT HAND THREAD PLAIN & ZINC PLATED

U.N.C.



SIZE	WIDTH ACROSS FLATS (F)	WIDTH ACROSS CORNERS (C)	THICKNESS (T)	LBS. PER 1000 PCS.	CARTON QUANTITY
1/4 - 20	7/16	1/2	7/32	7.4	9000
5/16 - 18	1/2	9/16	17/64	11	6000
3/8 - 16	9/16	41/64	21/64	16	3000
7/16 - 14	11/16	25/32	3/8	28	2000
1/2 - 13	3/4	27/32	7/16	37	1500
9/16 - 12	7/8	1	31/64	58	1000
5/8 - 11	15/16	1 1/16	35/64	73	800
3/4 - 10	1 1/8	1 9/32	41/64	119	500
7/8 - 9	1 5/16	1 31/64	3/4	190	300
1 - 8	1 1/2	1 11/16	55/64	283	200
1 1/8 - 7	1 11/16	1 29/32	31/32	403	130
1 1/4 - 7	1 7/8	2 1/8	1 1/16	543	100
1 3/8 - 6	2 1/16	2 5/16	1 11/64	730	80
1 1/2 - 6	2 1/4	2 17/32	1 9/32	943	60
1 5/8 - 5 1/2	2 7/16	2 3/4	1 25/64	1170	50
1 3/4 - 5	2 5/8	3 1/64	1 1/2	1510	35
1 7/8 - 5	2 3/4	3 11/64	1 3/4	2040	25
2 - 4 1/2	3	3 7/16	1 23/32	2240	25
2 1/4 - 4 1/2	3 3/8	3 57/64	1 59/64	3170	15
2 1/2 - 4	3 3/4	4 5/16	2 9/64	4350	10
2 3/4 - 4	4 1/8	4 3/4	2 23/64	5730	10
3 - 4	4 1/2	5 3/16	2 37/64	7400	8

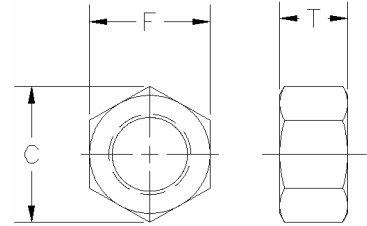
Quality, Price and Service, We Hold It All Together



STELFAST[®] INC.

**FINISHED HEX NUTS
GRADE 2 LEFT HAND THREAD
PLAIN & ZINC PLATED**

U.N.F.



SIZE	WIDTH ACROSS FLATS (F)	WIDTH ACROSS CORNERS (C)	THICKNESS (T)	LBS. PER 1000 PCS.	CARTON QUANTITY
1/4 - 28	7/16	1/2	7/32	7.4	9000
5/16 - 24	1/2	9/16	17/64	11	6000
3/8 - 24	9/16	41/64	21/64	16	3000
7/16 - 20	11/16	25/32	3/8	28	2000
1/2 - 20	3/4	27/32	7/16	37	1500
9/16 - 18	7/8	1	31/64	58	1000
5/8 - 18	15/16	1 1/16	35/64	73	800
3/4 - 16	1 1/8	1 9/32	41/64	119	500
7/8 - 14	1 5/16	1 31/64	3/4	190	300
1 - 14	1 1/2	1 11/16	55/64	283	200
1 1/8 - 12	1 11/16	1 29/32	31/32	403	135
1 1/4 - 12	1 7/8	2 1/8	1 1/16	543	100
1 3/8 - 12	2 1/16	2 5/16	1 11/64	730	80
1 1/2 - 12	2 1/4	2 17/32	1 9/32	943	60
1 5/8 - 12	2 7/16	2 3/4	1 25/64	1170	50
1 3/4 - 12	2 5/8	3 1/64	1 1/2	1510	35
1 7/8 - 12	2 3/4	3 11/64	1 3/4	2040	25
2 - 12	3	3 7/16	1 23/32	2240	25
2 1/4 - 12	3 3/8	3 57/64	1 59/64	3170	15
2 1/2 - 12	3 3/4	4 5/16	2 9/64	4350	10
2 3/4 - 12	4 1/8	4 3/4	2 23/64	5730	10
3 - 12	4 1/2	5 3/16	2 37/64	7400	8

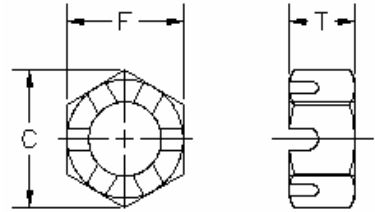
Quality, Price and Service, We Hold It All Together



STELFAST[®] INC.

FINISHED HEX SLOTTED NUTS GRADE 2 PLAIN & ZINC PLATED

U.N.C.



SIZE	WIDTH ACROSS FLATS (F)	WIDTH ACROSS CORNERS (C)	THICKNESS (T)	LBS. PER 1000 PCS.	CARTON QUANTITY
1/4 - 20	7/16	1/2	7/32	6.0	9000
5/16 - 18	1/2	9/16	17/64	9.0	6000
3/8 - 16	9/16	41/64	21/64	13	3000
7/16 - 14	11/16	25/32	3/8	24	2000
1/2 - 13	3/4	27/32	7/16	32	1500
9/16 - 12	7/8	1	31/64	49	1000
5/8 - 11	15/16	1 1/16	35/64	61	800
3/4 - 10	1 1/8	1 9/32	41/64	103	500
7/8 - 9	1 5/16	1 31/64	3/4	171	300
1 - 8	1 1/2	1 11/16	55/64	250	200
1 1/8 - 7	1 11/16	1 29/32	31/32	358	130
1 1/4 - 7	1 7/8	2 1/8	1 1/16	475	100
1 3/8 - 6	2 1/16	2 5/16	1 11/64	655	80
1 1/2 - 6	2 3/16	2 17/32	1 9/32	829	60
1 5/8 - 5 1/2	2 7/16	2 3/4	1 25/64	1170	50
1 3/4 - 5	2 5/8	3 1/64	1 1/2	1400	35
1 7/8 - 5	2 3/4	3 11/64	1 3/4	1940	25
2 - 4 1/2	3	3 7/16	1 23/32	2100	25
2 1/4 - 4 1/2	3 3/8	3 57/64	1 59/64	3000	15
2 1/2 - 4	3 3/4	4 5/16	2 9/64	4000	10
2 3/4 - 4	4 1/8	4 3/4	2 23/64	5300	10
3 - 4	4 1/2	5 3/16	2 37/64	6800	8

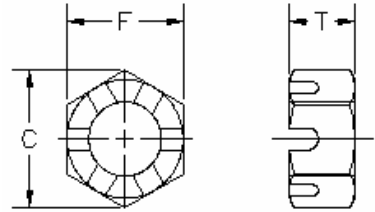
Quality, Price and Service, We Hold It All Together



STELFAST[®] INC.

FINISHED HEX SLOTTED NUTS GRADE 2 PLAIN & ZINC PLATED

U.N.F.



SIZE	WIDTH ACROSS FLATS (F)	WIDTH ACROSS CORNERS (C)	THICKNESS (T)	LBS. PER 1000 PCS.	CARTON QUANTITY
1/4 - 28	7/16	1/2	7/32	6.0	9000
5/16 - 24	1/2	9/16	17/64	9.0	6000
3/8 - 24	9/16	41/64	21/64	13	3000
7/16 - 20	11/16	25/32	3/8	24	2000
1/2 - 20	3/4	27/32	7/16	32	1500
9/16 - 18	7/8	1	31/64	49	1000
5/8 - 18	15/16	1 1/16	35/64	61	800
3/4 - 16	1 1/8	1 9/32	41/64	103	500
7/8 - 14	1 5/16	1 31/64	3/4	171	300
1 - 14	1 1/2	1 11/16	55/64	250	200
1 1/8 - 12	1 11/16	1 29/32	31/32	358	130
1 1/4 - 12	1 7/8	2 1/8	1 1/16	475	100
1 3/8 - 12	2 1/16	2 5/16	1 11/64	655	80
1 1/2 - 12	2 1/4	2 17/32	1 9/32	829	60
1 5/8 - 12	2 7/16	2 3/4	1 25/64	1170	50
1 3/4 - 12	2 5/8	3 1/64	1 1/2	1400	35
1 7/8 - 12	2 3/4	3 11/64	1 3/4	1940	25
2 - 12	3	3 7/16	1 23/32	2100	25
2 1/4 - 12	3 3/8	3 57/64	1 59/64	3000	15
2 1/2 - 12	3 3/4	4 5/16	2 9/64	4000	10
2 3/4 - 12	4 1/8	4 3/4	2 23/64	5300	10
3 - 12	4 1/2	5 3/16	2 37/64	6800	8

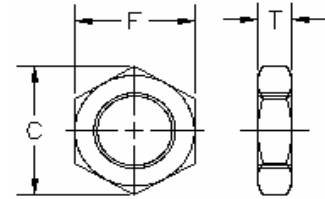
Quality, Price and Service, We Hold It All Together



STELFAST[®] INC.

FINISHED HEX JAM NUTS GRADE 2 PLAIN & ZINC PLATED

U.N.C.



SIZE	WIDTH ACROSS FLATS (F)	WIDTH ACROSS CORNERS (C)	THICKNESS (T)	LBS. PER 1000 PCS.	CARTON QUANTITY
1/4 - 20	7/16	1/2	5/32	5.2	12000
5/16 - 18	1/2	9/16	3/16	7.7	8000
3/8 - 16	9/16	41/64	7/32	11	6000
7/16 - 14	11/16	25/32	1/4	19	3500
1/2 - 13	3/4	27/32	5/16	26	2500
9/16 - 12	7/8	1	5/16	37	1700
5/8 - 11	15/16	1 1/16	3/8	49	1250
3/4 - 10	1 1/8	1 9/32	27/64	77	800
7/8 - 9	1 5/16	1 31/64	31/64	120	500
1 - 8	1 1/2	1 11/16	35/64	176	350
1 1/8 - 7	1 11/16	1 29/32	39/64	247	250
1 1/4 - 7	1 7/8	2 1/8	23/32	361	175
1 3/8 - 6	2 1/16	2 5/16	25/32	479	130
1 1/2 - 6	2 1/4	2 17/32	27/32	609	100
1 5/8 - 5 1/2	2 7/16	2 3/4	29/32	744	80
1 3/4 - 5	2 5/8	3 1/64	31/32	952	55
1 7/8 - 5	2 3/4	3 11/64	1 1/32	1170	40
2 - 4 1/2	3	3 7/16	1 3/32	1390	45
2 1/4 - 4 1/2	3 3/8	3 57/64	1 13/64	2020	30
2 1/2 - 4	3 3/4	4 5/16	1 29/64	3030	20
2 3/4 - 4	4 1/8	4 3/4	1 37/64	3950	15
3 - 4	4 1/2	5 3/16	1 45/64	5090	10

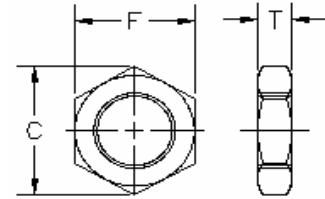
Quality, Price and Service, We Hold It All Together



STELFAST[®] INC.

FINISHED HEX JAM NUTS GRADE 2 PLAIN & ZINC PLATED

U.N.F.



SIZE	WIDTH ACROSS FLATS (F)	WIDTH ACROSS CORNERS (C)	THICKNESS (T)	LBS. PER 1000 PCS.	CARTON QUANTITY
1/4 - 28	7/16	1/2	5/32	5.2	12000
5/16 - 24	1/2	9/16	3/16	7.7	8000
3/8 - 24	9/16	41/64	7/32	11	6000
7/16 - 20	11/16	25/32	1/4	19	3500
1/2 - 20	3/4	27/32	5/16	26	2500
9/16 - 18	7/8	1	5/16	37	1700
5/8 - 18	15/16	1 1/16	3/8	49	1250
3/4 - 16	1 1/8	1 9/32	27/64	77	800
7/8 - 14	1 5/16	1 31/64	31/64	120	500
1 - 14	1 1/2	1 11/16	35/64	176	350
1 1/8 - 12	1 11/16	1 29/32	39/64	247	250
1 1/4 - 12	1 7/8	2 1/8	23/32	361	175
1 3/8 - 12	2 1/16	2 5/16	25/32	479	130
1 1/2 - 12	2 1/4	2 17/32	27/32	609	100
1 5/8 - 12	2 7/16	2 3/4	29/32	744	80
1 3/4 - 12	2 5/8	3 1/64	31/32	952	55
1 7/8 - 12	2 3/4	3 11/64	1 1/32	1170	40
2 - 12	3	3 7/16	1 3/32	1390	45
2 1/4 - 12	3 3/8	3 57/64	1 13/64	2020	30
2 1/2 - 12	3 3/4	4 5/16	1 29/64	3030	20
2 3/4 - 12	4 1/8	4 3/4	1 37/64	3950	15
3 - 12	4 1/2	5 3/16	1 45/64	5090	10

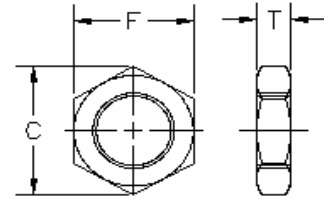
Quality, Price and Service, We Hold It All Together



STELFAST[®] INC.

FINISHED HEX JAM NUTS GRADE 2 GALVANIZED & TAPPED OVERSIZE

U.N.C.



SIZE	WIDTH ACROSS FLATS (F)	WIDTH ACROSS CORNERS (C)	THICKNESS (T)	LBS. PER 1000 PCS.	CARTON QUANTITY
1/4 - 20	7/16	1/2	5/32	5.2	12000
5/16 - 18	1/2	9/16	3/16	7.7	8000
3/8 - 16	9/16	41/64	7/32	11	6000
7/16 - 14	11/16	25/32	1/4	19	3500
1/2 - 13	3/4	27/32	5/16	26	2500
9/16 - 12	7/8	1	5/16	37	1700
5/8 - 11	15/16	1 1/16	3/8	49	1250
3/4 - 10	1 1/8	1 9/32	27/64	77	800
7/8 - 9	1 5/16	1 31/64	31/64	120	500
1 - 8	1 1/2	1 11/16	35/64	176	350
1 1/8 - 7	1 11/16	1 29/32	39/64	247	250
1 1/4 - 7	1 7/8	2 1/8	23/32	361	175
1 3/8 - 6	2 1/16	2 5/16	25/32	479	130
1 1/2 - 6	2 1/4	2 17/32	27/32	609	100
1 5/8 - 5 1/2	2 7/16	2 3/4	29/32	744	80
1 3/4 - 5	2 5/8	3 1/64	31/32	952	55
1 7/8 - 5	2 3/4	3 11/64	1 1/32	1170	40
2 - 4 1/2	3	3 7/16	1 3/32	1390	45
2 1/4 - 4 1/2	3 3/8	3 57/64	1 13/64	2020	30
2 1/2 - 4	3 3/4	4 5/16	1 29/64	3030	20
2 3/4 - 4	4 1/8	4 3/4	1 37/64	3950	15
3 - 4	4 1/2	5 3/16	1 45/64	5090	10

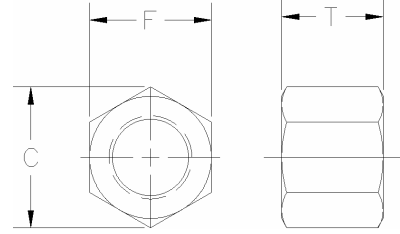
Quality, Price and Service, We Hold It All Together



STELFAST[®] INC.

HEAVY HEX NUTS GRADE 2 PLAIN & ZINC PLATED

U.N.C.



SIZE	WIDTH ACROSS FLATS (F)	WIDTH ACROSS CORNERS (C)	THICKNESS (T)	LBS. PER 1000 PCS.	CARTON QUANTITY
1/4 - 20	1/2	9/16	15/64	12	5000
5/16 - 18	9/16	5/8	19/64	17	3500
3/8 - 16	11/16	49/64	23/64	31	2000
7/16 - 14	3/4	27/32	27/64	42	1500
1/2 - 13	7/8	63/64	31/64	65	1000
9/16 - 12	15/16	1 3/64	35/64	82	700
5/8 - 11	1 1/16	1 3/16	39/64	119	500
3/4 - 10	1 1/4	1 13/32	47/64	193	300
7/8 - 9	1 7/16	1 5/8	55/64	297	200
1 - 8	1 5/8	1 27/32	63/64	425	150
1 1/8 - 7	1 13/16	2 3/64	1 7/64	592	100
1 1/4 - 7	2	2 1/4	1 7/32	786	75
1 3/8 - 6	2 3/16	2 15/32	1 11/32	1020	55
1 1/2 - 6	2 3/8	2 43/64	1 15/32	1310	45
1 5/8 - 5 1/2	2 9/16	2 7/8	1 19/32	1620	30
1 3/4 - 5	2 3/4	3 7/64	1 23/32	2040	25
1 7/8 - 5	2 15/16	3 5/16	1 27/32	2410	25
2 - 4 1/2	3 1/8	3 17/32	1 31/32	2990	20
2 1/4 - 4 1/2	3 1/2	3 15/16	2 13/64	4190	15
2 1/2 - 4	3 7/8	4 3/8	2 29/64	5640	10
2 3/4 - 4	4 1/4	4 25/32	2 45/64	7380	8
3 - 4	4 5/8	5 7/32	2 61/64	9500	6
3 1/4 - 4	5	5 5/8	3 3/16	11940	5
3 1/2 - 4	5 3/8	6 1/16	3 7/16	15260	4
3 3/4 - 4	5 3/4	6 1/2	3 11/16	18120	3
4 - 4	6 1/8	6 7/8	3 15/16	21800	2
4 1/4 - 4	6 1/2	7 11/32	4 1/4	27000	2
4 1/2 - 4	6 7/8	7 49/64	4 1/2	31000	2

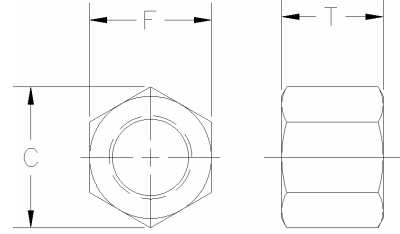
Quality, Price and Service, We Hold It All Together



STELFAST® INC.

HEAVY HEX NUTS GRADE 2

GALVANIZED & TAPPED OVERSIZE U.N.C.



SIZE	WIDTH ACROSS FLATS (F)	WIDTH ACROSS CORNERS (C)	THICKNESS (T)	LBS. PER 1000 PCS.	CARTON QUANTITY
1/4 - 20	1/2	9/16	15/64	12	5000
5/16 - 18	9/16	5/8	19/64	17	3500
3/8 - 16	11/16	49/64	23/64	31	2000
7/16 - 14	3/4	27/32	27/64	42	1500
1/2 - 13	7/8	63/64	31/64	65	1000
9/16 - 12	15/16	1 3/64	35/64	82	700
5/8 - 11	1 1/16	1 3/16	39/64	119	500
3/4 - 10	1 1/4	1 13/32	47/64	193	300
7/8 - 9	1 7/16	1 5/8	55/64	297	200
1 - 8	1 5/8	1 27/32	63/64	425	150
1 1/8 - 7	1 13/16	2 3/64	1 7/64	592	100
1 1/4 - 7	2	2 1/4	1 7/32	786	75
1 3/8 - 6	2 3/16	2 15/32	1 11/32	1020	55
1 1/2 - 6	2 3/8	2 43/64	1 15/32	1310	45
1 5/8 - 5 1/2	2 9/16	2 7/8	1 19/32	1620	30
1 3/4 - 5	2 3/4	3 7/64	1 23/32	2040	25
1 7/8 - 5	2 15/16	3 5/16	1 27/32	2410	25
2 - 4 1/2	3 1/8	3 17/32	1 31/32	2990	20
2 1/4 - 4 1/2	3 1/2	3 15/16	2 13/64	4190	15
2 1/2 - 4	3 7/8	4 3/8	2 29/64	5640	10
2 3/4 - 4	4 1/4	4 25/32	2 45/64	7380	8
3 - 4	4 5/8	5 7/32	2 61/64	9500	6
3 1/4 - 4	5	5 5/8	3 3/16	11940	5
3 1/2 - 4	5 3/8	6 1/16	3 7/16	15260	4
3 3/4 - 4	5 3/4	6 1/2	3 11/16	18120	3
4 - 4	6 1/8	6 7/8	3 15/16	21800	2
4 1/4 - 4	6 1/2	7 11/32	4 1/4	27000	2
4 1/2 - 4	6 7/8	7 49/64	4 1/2	31000	2

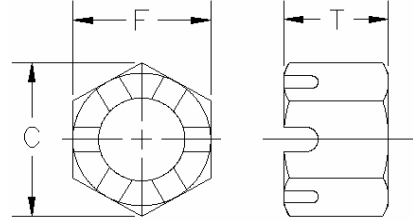
Quality, Price and Service, We Hold It All Together



STELFAST[®] INC.

HEAVY HEX SLOTTED NUTS GRADE 2 PLAIN & ZINC PLATED

U.N.C.



SIZE	WIDTH ACROSS FLATS (F)	WIDTH ACROSS CORNERS (C)	THICKNESS (T)	LBS. PER 1000 PCS.	CARTON QUANTITY
1/4 - 20	1/2	9/16	15/64	10	5000
5/16 - 18	9/16	5/8	19/64	15	3500
3/8 - 16	11/16	49/64	23/64	27	2000
7/16 - 14	3/4	27/32	27/64	36	1500
1/2 - 13	7/8	63/64	31/64	57	1000
9/16 - 12	15/16	1 3/64	35/64	71	700
5/8 - 11	1 1/16	1 3/16	39/64	102	500
3/4 - 10	1 1/4	1 13/32	47/64	171	300
7/8 - 9	1 7/16	1 5/8	55/64	272	200
1 - 8	1 5/8	1 27/32	63/64	385	150
1 1/8 - 7	1 13/16	2 3/64	1 7/64	537	100
1 1/4 - 7	2	2 1/4	1 7/32	706	75
1 3/8 - 6	2 3/16	2 15/32	1 11/32	933	55
1 1/2 - 6	2 3/8	2 43/64	1 15/32	1180	45
1 5/8 - 5 1/2	2 9/16	2 7/8	1 19/32	1480	30
1 3/4 - 5	2 3/4	3 7/64	1 23/32	1840	25
1 7/8 - 5	2 15/16	3 5/16	1 27/32	2180	25
2 - 4 1/2	3 1/8	3 17/32	1 31/32	2740	20
2 1/4 - 4 1/2	3 1/2	3 15/16	2 13/64	3910	15
2 1/2 - 4	3 7/8	4 3/8	2 29/64	5160	10
2 3/4 - 4	4 1/4	4 25/32	2 45/64	6860	8
3 - 4	4 5/8	5 7/32	2 61/64	8820	6
3 1/4 - 4	5	5 5/8	3 3/16	11210	5
3 1/2 - 4	5 3/8	6 1/16	3 7/16	14490	4
3 3/4 - 4	5 3/4	6 1/2	3 11/16	17300	3
4 - 4	6 1/8	6 7/8	3 15/16	20930	2
4 1/4 - 4	6 1/2	7 11/32	4 1/4	26300	2
4 1/2 - 4	6 7/8	7 49/64	4 1/2	30300	2

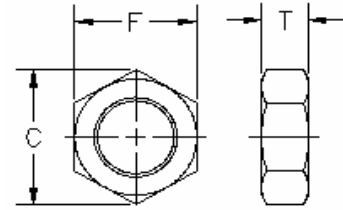
Quality, Price and Service, We Hold It All Together



STELFAST[®] INC.

HEAVY HEX JAM NUTS GRADE 2 PLAIN - ZINC PLATED & HDG & TAPPED OVERSIZE

U.N.C.



SIZE	WIDTH ACROSS FLATS (F)	WIDTH ACROSS CORNERS (C)	THICKNESS (T)	LBS. PER 1000 PCS.	CARTON QUANTITY
1/4 - 20	1/2	9/16	11/64	8.5	7000
5/16 - 18	9/16	5/8	13/64	12	5000
3/8 - 16	11/16	49/64	15/64	20	3000
7/16 - 14	3/4	27/32	17/64	26	2000
1/2 - 13	7/8	63/64	19/64	40	1500
9/16 - 12	15/16	1 3/64	21/64	49	1200
5/8 - 11	1 1/16	1 3/16	23/64	70	800
3/4 - 10	1 1/4	1 13/32	27/64	110	500
7/8 - 9	1 7/16	1 5/8	31/64	167	350
1 - 8	1 5/8	1 27/32	35/64	235	250
1 1/8 - 7	1 13/16	2 3/64	39/64	324	175
1 1/4 - 7	2	2 1/4	23/32	458	125
1 3/8 - 6	2 3/16	2 15/32	25/32	593	100
1 1/2 - 6	2 3/8	2 43/64	27/32	748	80
1 5/8 - 5 1/2	2 9/16	2 7/8	29/32	916	60
1 3/4 - 5	2 3/4	3 7/64	31/32	1140	50
1 7/8 - 5	2 15/16	3 5/16	1 1/32	1340	40
2 - 4 1/2	3 1/8	3 17/32	1 3/32	1650	35
2 1/4 - 4 1/2	3 1/2	3 15/16	1 13/64	2270	25
2 1/2 - 4	3 7/8	4 3/8	1 29/64	3320	15
2 3/4 - 4	4 1/4	4 25/32	1 37/64	4290	12
3 - 4	4 5/8	5 7/32	1 45/64	5450	10
3 1/4 - 4	5	5 5/8	1 13/16	6510	8
3 1/2 - 4	5 3/8	6 1/16	1 15/16	8510	6
3 3/4 - 4	5 3/4	6 1/2	2 1/16	10050	6
4 - 4	6 1/8	6 7/8	2 3/16	12000	5
4 1/4 - 4	6 1/2	7 11/32	2 7/16	14300	3
4 1/2 - 4	6 7/8	7 49/64	2 9/16	16000	2

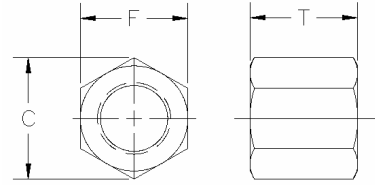
Quality, Price and Service, We Hold It All Together



STELFAST[®] INC.

HEAVY HEX NUTS ASTM A-194 GRADE 2H

U.N.C.



SIZE	WIDTH ACROSS FLATS (F)	WIDTH ACROSS CORNERS (C)	THICKNESS (T)	LBS. PER 1000 PCS.	CARTON QUANTITY
1/4 - 20	1/2	9/16	15/64	12	5000
5/16 - 18	9/16	5/8	19/64	17	3000
3/8 - 16	11/16	49/64	23/64	31	2000
7/16 - 14	3/4	27/32	27/64	42	1250
1/2 - 13	7/8	63/64	31/64	65	900
9/16 - 12	15/16	1 3/64	35/64	82	700
5/8 - 11	1 1/16	1 3/16	39/64	119	500
3/4 - 10	1 1/4	1 13/32	47/64	193	300
7/8 - 9	1 7/16	1 5/8	55/64	297	200
1 - 8	1 5/8	1 27/32	63/64	425	140
1 1/8 - 7	1 13/16	2 3/64	1 7/64	592	350
1 1/4 - 7	2	2 1/4	1 7/32	786	270
1 3/8 - 6	2 3/16	2 15/32	1 11/32	1020	200
1 1/2 - 6	2 3/8	2 43/64	1 15/32	1310	150
1 5/8 - 5 1/2	2 9/16	2 7/8	1 19/32	1620	120
1 3/4 - 5	2 3/4	3 7/64	1 23/32	2040	95
1 7/8 - 5	2 15/16	3 5/16	1 27/32	2410	80
2 - 4 1/2	3 1/8	3 17/32	1 31/32	2990	65
2 1/4 - 4 1/2	3 1/2	3 15/16	2 13/64	4190	48
2 1/2 - 4	3 7/8	4 3/8	2 29/64	5640	42
2 3/4 - 4	4 1/4	4 25/32	2 45/64	7380	25
3 - 4	4 5/8	5 7/32	2 61/64	9500	20
3 1/4 - 4	5	5 5/8	3 3/16	11940	15
3 1/2 - 4	5 3/8	6 1/16	3 7/16	15260	12
3 3/4 - 4	5 3/4	6 1/2	3 11/16	18120	10
4 - 4	6 1/8	6 7/8	3 15/16	21800	8
4 1/4 - 4	6 1/2	7 11/32	4 1/4	27000	7
4 1/2 - 4	6 7/8	7 49/64	4 1/2	31000	6

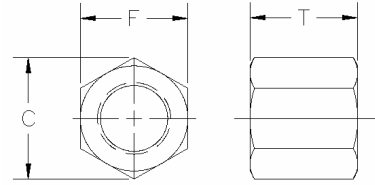
Quality, Price and Service, We Hold It All Together



STELFAST[®] INC.

HEAVY HEX NUTS ASTM A-194 GRADE 2H

8 PITCH



SIZE	WIDTH ACROSS FLATS (F)	WIDTH ACROSS CORNERS (C)	THICKNESS (T)	LBS. PER 1000 PCS.	CARTON QUANTITY
1 1/8 - 8	1 13/16	2 3/64	1 7/64	592	350
1 1/4 - 8	2	2 1/4	1 7/32	786	270
1 3/8 - 8	2 3/16	2 15/32	1 11/32	1020	200
1 1/2 - 8	2 3/8	2 43/64	1 15/32	1310	150
1 5/8 - 8	2 9/16	2 7/8	1 19/32	1620	120
1 3/4 - 8	2 3/4	3 7/64	1 23/32	2040	95
1 7/8 - 8	2 15/16	3 5/16	1 27/32	2410	80
2 - 8	3 1/8	3 17/32	1 31/32	2990	65
2 1/4 - 8	3 1/2	3 15/16	2 13/64	4190	48
2 1/2 - 8	3 7/8	4 3/8	2 29/64	5640	42
2 3/4 - 8	4 1/4	4 25/32	2 45/64	7380	25
3 - 8	4 5/8	5 7/32	2 61/64	9500	20
3 1/4 - 8	5	5 5/8	3 3/16	11940	15
3 1/2 - 8	5 3/8	6 1/16	3 7/16	15260	12
3 3/4 - 8	5 3/4	6 1/2	3 11/16	18120	10
4 - 8	6 1/8	6 7/8	3 15/16	21800	8
4 1/4 - 8	6 1/2	7 11/32	4 1/4	27000	7
4 1/2 - 8	6 7/8	7 49/64	4 1/2	31000	6

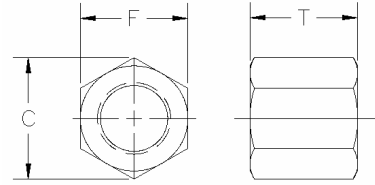
Quality, Price and Service, We Hold It All Together



STELFAST[®] INC.

HEAVY HEX NUTS ASTM A-194 GRADE 2H

U.N.F.



SIZE	WIDTH ACROSS FLATS (F)	WIDTH ACROSS CORNERS (C)	THICKNESS (T)	LBS. PER 1000 PCS.	CARTON QUANTITY
1/2 - 20	7/8	63/64	31/64	65	900
9/16 - 18	15/16	1 3/64	35/64	82	700
5/8 - 18	1 1/16	1 3/16	39/64	119	500
3/4 - 16	1 1/4	1 13/32	47/64	193	300
7/8 - 14	1 7/16	1 5/8	55/64	297	200
1 - 14	1 5/8	1 27/32	63/64	425	140
1 1/8 - 12	1 13/16	2 3/64	1 7/64	592	350
1 1/4 - 12	2	2 1/4	1 7/32	786	270
1 3/8 - 12	2 3/16	2 15/32	1 11/32	1020	200
1 1/2 - 12	2 3/8	2 43/64	1 15/32	1310	150
1 5/8 - 12	2 9/16	2 7/8	1 19/32	1620	120
1 3/4 - 12	2 3/4	3 7/64	1 23/32	2040	95
1 7/8 - 12	2 15/16	3 5/16	1 27/32	2410	80
2 - 12	3 1/8	3 17/32	1 31/32	2990	65
2 1/4 - 12	3 1/2	3 15/16	2 13/64	4190	48
2 1/2 - 12	3 7/8	4 3/8	2 29/64	5640	42
2 3/4 - 12	4 1/4	4 25/32	2 45/64	7380	25
3 - 12	4 5/8	5 7/32	2 61/64	9500	20
3 1/4 - 12	5	5 5/8	3 3/16	11940	15
3 1/2 - 12	5 3/8	6 1/16	3 7/16	15260	12
3 3/4 - 12	5 3/4	6 1/2	3 11/16	18120	10
4 - 12	6 1/8	6 7/8	3 15/16	21800	8
4 1/4 - 12	6 1/2	7 11/32	4 1/4	27000	7
4 1/2 - 12	6 7/8	7 49/64	4 1/2	31000	6

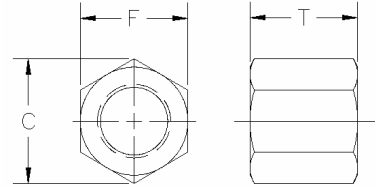
Quality, Price and Service, We Hold It All Together



STELFAST[®] INC.

HEAVY HEX NUTS ASTM A-194 GRADE 2H HDG & TAPPED OVERSIZE

U.N.C.



SIZE	WIDTH ACROSS FLATS (F)	WIDTH ACROSS CORNERS (C)	THICKNESS (T)	LBS. PER 1000 PCS.	CARTON QUANTITY
1/2 - 13	7/8	63/64	31/64	65	900
9/16 - 12	15/16	1 3/64	35/64	82	700
5/8 - 11	1 1/16	1 3/16	39/64	119	500
3/4 - 10	1 1/4	1 13/32	47/64	193	300
7/8 - 9	1 7/16	1 5/8	55/64	297	200
1 - 8	1 5/8	1 27/32	63/64	425	140
1 1/8 - 7	1 13/16	2 3/64	1 7/64	592	350
1 1/4 - 7	2	2 1/4	1 7/32	786	270
1 3/8 - 6	2 3/16	2 15/32	1 11/32	1020	200
1 1/2 - 6	2 3/8	2 43/64	1 15/32	1310	150
1 5/8 - 5 1/2	2 9/16	2 7/8	1 19/32	1620	120
1 3/4 - 5	2 3/4	3 7/64	1 23/32	2040	95
1 7/8 - 5	2 15/16	3 5/16	1 27/32	2410	80
2 - 4 1/2	3 1/8	3 17/32	1 31/32	2990	65
2 1/4 - 4 1/2	3 1/2	3 15/16	2 13/64	4190	48
2 1/2 - 4	3 7/8	4 3/8	2 29/64	5640	42
2 3/4 - 4	4 1/4	4 25/32	2 45/64	7380	25
3 - 4	4 5/8	5 7/32	2 61/64	9500	20
3 1/4 - 4	5	5 5/8	3 3/16	11940	15
3 1/2 - 4	5 3/8	6 1/16	3 7/16	15260	12
3 3/4 - 4	5 3/4	6 1/2	3 11/16	18120	10
4 - 4	6 1/8	6 7/8	3 15/16	21800	8
4 1/4 - 4	6 1/2	7 11/32	4 1/4	27000	7
4 1/2 - 4	6 7/8	7 49/64	4 1/2	31000	6

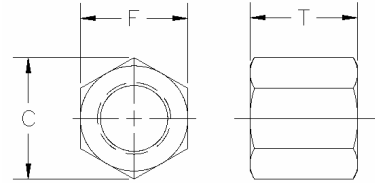
Quality, Price and Service, We Hold It All Together



STELFAST[®] INC.

**HEAVY HEX NUTS
ASTM A-194 GRADE 2H
HDG & TAPPED OVERSIZE**

8 PITCH



SIZE	WIDTH ACROSS FLATS (F)	WIDTH ACROSS CORNERS (C)	THICKNESS (T)	LBS. PER 1000 PCS.	CARTON QUANTITY
1 1/8 - 8	1 13/16	2 3/32	1 7/64	592	350
1 1/4 - 8	2	2 1/4	1 7/32	786	270
1 3/8 - 8	2 3/16	2 15/32	1 11/32	1020	200
1 1/2 - 8	2 3/8	2 43/64	1 15/32	1310	150
1 5/8 - 8	2 9/16	2 7/8	1 19/32	1620	120
1 3/4 - 8	2 3/4	3 7/64	1 23/32	2040	95
1 7/8 - 8	2 15/16	3 5/16	1 27/32	2410	80
2 - 8	3 1/8	3 17/32	1 31/32	2990	65
2 1/4 - 8	3 1/2	3 15/16	2 13/64	4190	48
2 1/2 - 8	3 7/8	4 3/8	2 29/64	5640	42
2 3/4 - 8	4 1/4	4 25/32	2 45/64	7380	25
3 - 8	4 5/8	5 7/32	2 61/64	9500	20

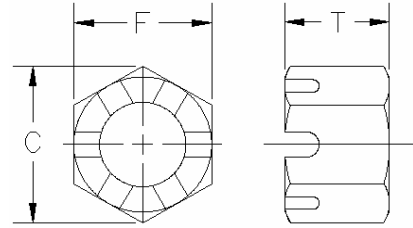
Quality, Price and Service, We Hold It All Together



STELFAST[®] INC.

HEAVY HEX SLOTTED NUTS ASTM A-194 GRADE 2H

U.N.C.



SIZE	WIDTH ACROSS FLATS (F)	WIDTH ACROSS CORNERS (C)	THICKNESS (T)	LBS. PER 1000 PCS.	CARTON QUANTITY
1/2 - 13	7/8	63/64	31/64	57	900
9/16 - 12	15/16	1 3/64	35/64	71	700
5/8 - 11	1 1/16	1 3/16	39/64	102	500
3/4 - 10	1 1/4	1 13/32	47/64	171	300
7/8 - 9	1 7/16	1 5/8	55/64	272	200
1 - 8	1 5/8	1 27/32	63/64	385	140
1 1/8 - 7	1 13/16	2 3/64	1 7/64	537	350
1 1/4 - 7	2	2 1/4	1 7/32	706	270
1 3/8 - 6	2 3/16	2 15/32	1 11/32	933	200
1 1/2 - 6	2 3/8	2 43/64	1 15/32	1180	150
1 5/8 - 5 1/2	2 9/16	2 7/8	1 19/32	1480	120
1 3/4 - 5	2 3/4	3 7/64	1 23/32	1840	95
1 7/8 - 5	2 15/16	3 5/16	1 27/32	2180	80
2 - 4 1/2	3 1/8	3 17/32	1 31/32	2740	65
2 1/4 - 4 1/2	3 1/2	3 15/16	2 13/64	3910	48
2 1/2 - 4	3 7/8	4 3/8	2 29/64	5160	42
2 3/4 - 4	4 1/4	4 25/32	2 45/64	6860	25
3 - 4	4 5/8	5 7/32	2 61/64	8820	20
3 1/4 - 4	5	5 5/8	3 3/16	11200	15
3 1/2 - 4	5 3/8	6 1/16	3 7/16	14490	12
3 3/4 - 4	5 3/4	6 1/2	3 11/16	17300	10
4 - 4	6 1/8	6 7/8	3 15/16	20930	8
4 1/4 - 4	6 1/2	7 11/32	4 1/4	26300	7
4 1/2 - 4	6 7/8	7 49/64	4 1/2	30300	6

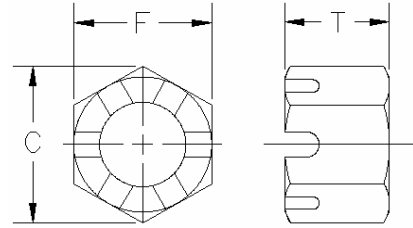
Quality, Price and Service, We Hold It All Together



STELFAST[®] INC.

HEAVY HEX SLOTTED NUTS ASTM A-194 GRADE 2H HDG & TAPPED OVERSIZE

U.N.



SIZE	WIDTH ACROSS FLATS (F)	WIDTH ACROSS CORNERS (C)	THICKNESS (T)	LBS. PER 1000 PCS.	CARTON QUANTITY
1 1/8 - 8	1 13/16	2 3/64	1 7/64	537	350
1 1/4 - 8	2	2 1/4	1 7/32	706	270
1 3/8 - 8	2 3/16	2 15/32	1 11/32	933	200
1 1/2 - 8	2 3/8	2 43/64	1 15/32	1180	150
1 5/8 - 8	2 9/16	2 7/8	1 19/32	1480	120
1 3/4 - 8	2 3/4	3 7/64	1 23/32	1840	95
1 7/8 - 8	2 15/16	3 5/16	1 27/32	2180	80
2 - 8	3 1/8	3 17/32	1 31/32	2740	65
2 1/4 - 8	3 1/2	3 15/16	2 13/64	3910	48
2 1/2 - 8	3 7/8	4 3/8	2 29/64	5160	42
2 3/4 - 8	4 1/4	4 25/32	2 45/64	6860	25
3 - 8	4 5/8	5 7/32	2 61/64	8820	20
3 1/4 - 8	5	5 5/8	3 3/16	11200	15
3 1/2 - 8	5 3/8	6 1/16	3 7/16	14490	12
3 3/4 - 8	5 3/4	6 1/2	3 11/16	17300	10
4 - 8	6 1/8	6 7/8	3 15/16	20930	8
4 1/4 - 8	6 1/2	7 11/32	4 1/4	26300	7
4 1/2 - 8	6 7/8	7 49/64	4 1/2	30300	6

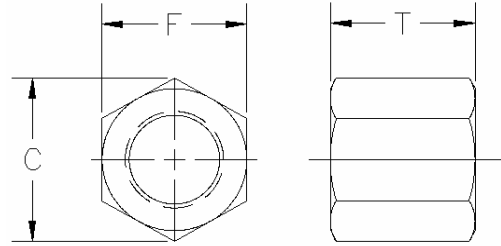
Quality, Price and Service, We Hold It All Together



STELFAST® INC.

HEAVY HEX NUTS
GRADE C A563
PLAIN, ZINC & HDG

U.N.C.



SIZE	WIDTH ACROSS FLATS (F)	WIDTH ACROSS CORNERS (C)	THICKNESS (T)	LBS. PER 1000 PCS.	CARTON QUANTITY
1/2 - 13	7/8	63/64	31/64	65	1000
5/8 - 11	1 1/16	1 3/16	39/64	119	500
3/4 - 10	1 1/4	1 13/32	47/64	193	300
7/8 - 9	1 7/16	1 5/8	55/64	297	200
1 - 8	1 5/8	1 27/32	63/64	425	150

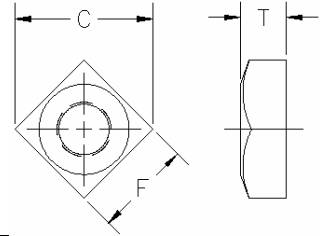
Quality, Price and Service, We Hold It All Together



STELFAST[®] INC.

REGULAR SQUARE NUTS GRADE 2 PLAIN - ZINC PLATED & HDG

U.N.C.



SIZE	WIDTH ACROSS FLATS (F)	WIDTH ACROSS CORNERS (C)	THICKNESS (T)	LBS. PER 1000 PCS.	CARTON QUANTITY
1/4 - 20	7/16	39/64	7/32	9	5500
5/16 - 18	9/16	25/32	17/64	18	3750
3/8 - 16	5/8	55/64	21/64	26	2000
7/16 - 14	3/4	1 1/32	3/8	44	1200
1/2 - 13	13/16	1 1/8	7/16	58	1000
5/8 - 11	1	1 3/8	35/64	108	500
3/4 - 10	1 1/8	1 17/32	21/32	154	350
7/8 - 9	1 5/16	1 51/64	49/64	245	220
1 - 8	1 1/2	2 1/16	7/8	363	150
1 1/8 - 7	1 11/16	2 5/16	1	525	100
1 1/4 - 7	1 7/8	2 9/16	1 3/32	706	80
1 3/8 - 6	2 1/16	2 53/64	1 13/64	945	45
1 1/2 - 6	2 1/4	3 3/32	1 5/16	1220	20

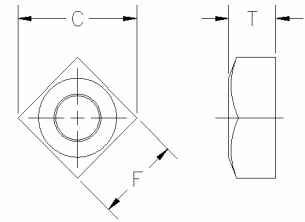
Quality, Price and Service, We Hold It All Together



STELFAST[®] INC.

HEAVY SQUARE NUTS GRADE 2 PLAIN - PLATED & HDG

U.N.C.



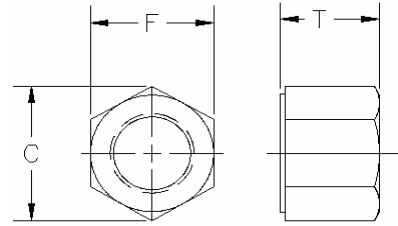
SIZE	WIDTH ACROSS FLATS (F)	WIDTH ACROSS CORNERS (C)	THICKNESS (T)	LBS. PER 1000 PCS.	CARTON QUANTITY
1/2 - 13	7/8	1 13/64	1/2	79	700
5/8 - 11	1 1/16	1 15/32	5/8	143	400
3/4 - 10	1 1/4	1 23/32	3/4	235	250
7/8 - 9	1 7/16	1 31/31	7/8	362	150
1 - 8	1 5/8	2 15/64	1	515	100
1 1/8 - 7	1 13/16	2 1/2	1 1/8	724	80
1 1/4 - 7	2	2 3/4	1 1/4	955	60
1 3/8 - 6	2 3/16	3 1/32	1 3/8	1250	45
1 1/2 - 6	2 3/8	3 9/32	1 1/2	1610	35
1 3/4 - 5	2 3/4	3 57/64	1 3/4	2510	25
2 - 4 1/2	3 1/8	4 13/32	2	3670	15
2 1/4 - 4 1/2	3 1/2	4 29/32	2 1/4	5400	10
2 1/2 - 4	3 7/8	5 27/64	2 1/2	7300	8
2 3/4 - 4	4 1/4	5 61/64	2 3/4	9500	6
3 - 4	4 5/8	6 15/32	3	12000	5

Quality, Price and Service, We Hold It All Together



STELFAST[®] INC.

HIGH (DEEP) NUTS GRADE 8 PLAIN



SIZE	WIDTH ACROSS FLATS (F)	WIDTH ACROSS CORNERS (C)	THICKNESS (T)	LBS. PER 1000 PCS.	CARTON QUANTITY
1/2 - 20	3/4	27/32	11/16	70	800
9/16 - 18	7/8	1	49/64	90	600
5/8 - 18	15/16	1 1/16	27/32	110	500
3/4 - 16	1 1/16	1 9/32	1	180	300
3/4 - 16	1 1/8	1 9/32	1	180	300
7/8 - 14	1 1/4	1 31/64	1 5/32	275	180
7/8 - 14	1 5/16	1 31/64	1 5/32	275	180
1 - 14	1 7/16	1 21/32	1 5/16	410	125
1 - 14	1 1/2	1 11/16	1 5/16	420	125
1 1/8 - 12	1 5/8	1 7/8	1 15/32	550	70
1 1/4 - 12	1 13/16	2 3/32	1 5/8	850	50

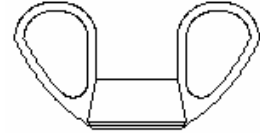
Quality, Price and Service, We Hold It All Together



STELFAST® INC.

WING NUTS COLD FORGED—TYPE A PLAIN—ZINC PLATED

U.N.C.



SIZE	WING SPREAD	LBS. PER 1000 PCS.	CARTON QUANTITY
8 - 32	27/32	7	8000
10 - 24	27/32	7	8000
10 - 32	27/32	7	8000
1/4 - 20	1 1/16	15	4000
5/16 - 18	1 7/32	20	3000
3/8 - 16	1 13/32	35	1500
7/16 - 14	2"	70	800
1/2 - 13	2"	85	700
5/8 - 11	2 11/16	200	300
3/4 - 10	2 11/16	190	300

SPRING TOGGLE WING NUTS ZINC PLATED

U.N.C.



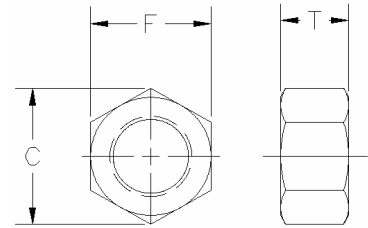
SIZE	PITCH	CARTON QUANTITY	LBS. PER 1000 PCS.
1/8	6 - 32	8000	7
5/32	8 - 32	3000	15
3/16	10 - 24	3000	19
1/4	1/4 - 20	2000	25
5/16	5/16 - 18	1000	42
3/8	3/8 - 16	700	55
1/2	1/2 - 13	200	65

Quality, Price and Service, We Hold It All Together



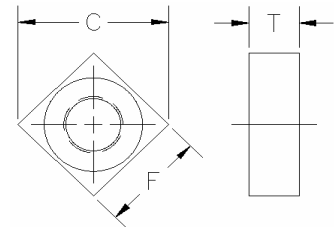
STELFAST[®] INC.

HEX MACHINE SCREW NUTS PLAIN & ZINC PLATED



SIZE	WIDTH ACROSS FLATS (F)	WIDTH ACROSS CORNERS (C)	THICKNESS (T)	LBS. PER 1000 PCS.	CARTON QUANTITY
4 - 40	1/4	9/32	3/32	1.1	50000
6 - 32	5/16	11/32	7/64	2.1	25000
8 - 32	11/32	25/64	1/8	2.8	20000
10 - 24 / 32	3/8	27/64	1/8	3.3	18000
12 - 24	7/16	1/2	5/32	5.6	10000
1/4 - 20	7/16	1/2	3/16	6.1	9000
5/16 - 18	9/16	5/8	7/32	12.1	5000
3/8 - 16	5/8	23/32	1/4	15.8	3500

SQUARE MACHINE SCREW NUTS PLAIN & ZINC PLATED



SIZE	WIDTH ACROSS FLATS (F)	WIDTH ACROSS CORNERS (C)	THICKNESS (T)	LBS. PER 1000 PCS.	CARTON QUANTITY
4 - 40	1/4	11/32	3/32	1.1	50000
5 - 40	5/16	7/16	7/64	2.1	30000
6 - 32	5/16	7/16	7/64	2.1	30000
8 - 32	11/32	15/32	1/8	2.8	20000
10 - 24 / 32	3/8	33/64	1/8	3.3	20000
1/4 - 20	7/16	37/64	3/16	6.1	10000
5/16 - 18	9/16	25/32	7/32	12.1	5000
3/8 - 16	5/8	7/8	1/4	15.8	4000

Quality, Price and Service, We Hold It All Together

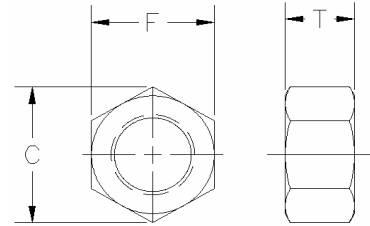


STELFAST® INC.

FINISHED HEX NUTS GRADE 2

PLAIN & ZINC PLATED

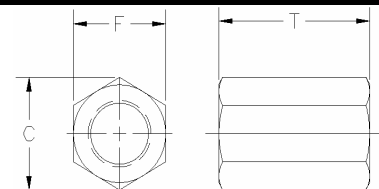
ACME THREAD



SIZE	WIDTH ACROSS FLATS (F)	WIDTH ACROSS CORNERS (C)	THICKNESS (T)	LBS. PER 1000 PCS.	CARTON QUANTITY
1/2 - 10	3/4	27/32	7/16	37	1600
5/8 - 8	15/16	1 1/16	35/64	73	800
3/4 - 6	1 1/8	1 9/32	41/64	119	500
7/8 - 6	1 5/16	1 31/64	3/4	190	300
1 - 5	1 1/2	1 11/16	55/64	283	190
1 1/4 - 5	1 7/8	2 1/8	1 1/16	543	125
1 3/8 - 4	2 1/16	2 5/16	1 11/64	730	90
1 1/2 - 4	2 1/4	2 17/32	1 9/32	943	65
1 3/4 - 4	2 5/8	3 1/64	1 1/2	1510	40
2 - 4	3	3 11/64	1 23/32	2040	25

HEX COUPLING NUTS GRADE 2

PLAIN — ZINC PLATED U.N.C.



SIZE	WIDTH ACROSS FLATS (F)	WIDTH ACROSS CORNERS (C)	THICKNESS (T)	LBS. PER 1000 PCS.	CARTON QUANTITY
1/4 - 20	7/16	1/2	7/8	30	2000
5/16 - 18	1/2	9/16	1 3/4	70	700
3/8 - 16	9/16	41/64	1 3/4	90	500
7/16 - 14	5/8	23/32	1 3/4	104	500
1/2 - 13	3/4	27/32	1 3/4	150	300
5/8 - 11	15/16	1 1/16	2 1/8	310	150
3/4 - 10	1 1/8	1 1/4	2 1/4	420	125
7/8 - 9	1 1/4	1 7/16	2 1/2	550	100
1 - 8	1 1/4	1 7/16	2 1/2	700	80
1 1/8 - 7	1 5/8	1 13/16	3	1800	30
1 1/4 - 7	1 5/8	1 13/16	3	2100	25
1 3/8 - 6	2	3 1/2	3 1/2	3100	20
1 1/2 - 6	2	3 1/2	4	3900	15

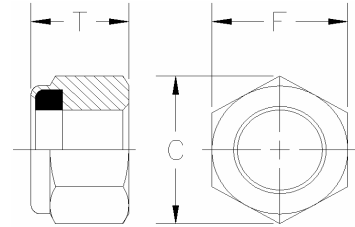
Quality, Price and Service, We Hold It All Together



STELFAST® INC.

NYLON INSERT LOCKNUTS GRADE 2 & 8 (GRADE A & C) NE SERIES PLATED

U.N.C.



SIZE	WIDTH ACROSS FLATS (F)	WIDTH ACROSS CORNERS (C)	THICKNESS (T)	LBS. PER 1000 PCS.	CARTON QUANTITY
1/4 - 20	.438	.488	.313	9	6000
5/16 - 18	.500	.557	.344	12	5000
3/8 - 16	.562	.628	.453	18	3000
7/16 - 14	.625	.698	.453	23	2500
1/2 - 13	.750	.840	.594	43	1250
9/16 - 12	.875	.982	.641	71	800
5/8 - 11	.938	1.051	.750	83	700
3/4 - 10	1.062	1.191	.875	120	500
7/8 - 9	1.250	1.403	.984	190	300
1 - 8	1.438	1.615	1.047	270	200
1 1/8 - 7	1.625	1.826	1.172	410	125
1 1/4 - 7	1.812	2.038	1.391	580	100
1 3/8 - 6	2.000	2.249	1.578	770	75
1 1/2 - 6	2.188	2.416	1.609	1000	60

U.N.F.

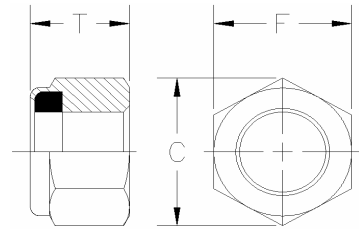
SIZE	WIDTH ACROSS FLATS (F)	WIDTH ACROSS CORNERS (C)	THICKNESS (T)	LBS. PER 1000 PCS.	CARTON QUANTITY
1/4 - 28	.438	.488	.313	9	6000
5/16 - 24	.500	.557	.344	12	5000
3/8 - 24	.562	.628	.453	18	3000
7/16 - 20	.625	.698	.453	23	2500
1/2 - 20	.750	.840	.594	43	1250
9/16 - 18	.875	.982	.641	71	800
5/8 - 18	.938	1.051	.750	83	700
3/4 - 16	1.062	1.191	.875	120	500
7/8 - 14	1.250	1.403	.984	190	300
1 - 14	1.438	1.615	1.047	270	200
1 1/8 - 12	1.625	1.826	1.172	410	125
1 1/4 - 12	1.812	2.038	1.391	580	100
1 3/8 - 12	2.000	2.249	1.578	770	75
1 1/2 - 12	2.188	2.416	1.609	1000	60

Quality, Price and Service, We Hold It All Together



STELFAST[®] INC.

NYLON INSERT LOCKNUTS NU SERIES PLATED NM SERIES PLATED



U.N.C.

SIZE	WIDTH ACROSS FLATS (F)	WIDTH ACROSS CORNERS (C)	THICKNESS (T)	LBS. PER 1000 PCS.	CARTON QUANTITY
1 5/8 - 5 1/2	2.562	2.880	2.141	1850	32
1 3/4 - 5	2.750	3.035	2.313	2400	25
2 - 4 1/2	3.125	3.449	2.406	3100	20
2 1/4 - 4 1/2	3.500	3.990	2.813	4500	12
2 1/2 - 4	4.000	4.618	3.141	6820	8
2 3/4 - 4	4.000	4.618	3.141	5300	8
3 - 4	4.500	5.102	3.625	10000	4

U.N.F.

SIZE	WIDTH ACROSS FLATS (F)	WIDTH ACROSS CORNERS (C)	THICKNESS (T)	LBS. PER 1000 PCS.	CARTON QUANTITY
1 5/8 - 12	2.562	2.880	2.141	1850	32
1 3/4 - 12	2.750	3.035	2.313	2400	25
2 - 12	3.125	3.449	2.406	3100	20
2 1/4 - 12	3.500	3.990	2.813	4500	12
2 1/2 - 12	4.000	4.618	3.141	6820	8
2 3/4 - 12	4.000	4.618	3.141	5300	8
3 - 12	4.500	5.102	3.625	10000	4

NM SERIES

SIZE	WIDTH ACROSS FLATS (F)	WIDTH ACROSS CORNERS (C)	THICKNESS (T)	LBS. PER 1000 PCS.	CARTON QUANTITY
4 - 40	.250	.275	.143	2.6	20000
6 - 32	.312	.344	.178	2.6	20000
8 - 32	.345	.378	.229	4.2	10000
10 - 24	.375	.413	.239	5.0	10000
10 - 32	.375	.413	.239	5.0	10000

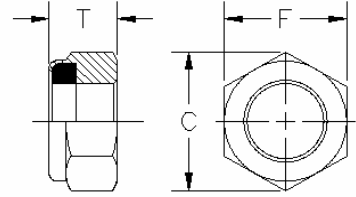
Quality, Price and Service, We Hold It All Together



STELFAST[®] INC.

NYLON INSERT LOCKNUTS NTE SERIES PLATED

U.N.C.



SIZE	WIDTH ACROSS FLATS (F)	WIDTH ACROSS CORNERS (C)	THICKNESS (T)	LBS. PER 1000 PCS.	CARTON QUANTITY
1/4 - 20	.438	.488	.203	5	10000
5/16 - 18	.500	.557	.250	8	7000
3/8 - 16	.562	.628	.266	10	6000
7/16 - 14	.625	.698	.313	13	4000
1/2 - 13	.750	.840	.313	20	2000
9/16 - 12	.875	.982	.359	35	1500
5/8 - 11	.938	1.051	.391	39	1500
3/4 - 10	1.062	1.191	.406	52	1000
7/8 - 9	1.250	1.403	.469	80	700
1 - 8	1.438	1.615	.547	140	400
1 1/8 - 7	1.625	1.826	.641	190	250
1 1/4 - 7	1.812	2.038	.734	270	200
1 3/8 - 6	2.000	2.249	.790	330	175
1 1/2 - 6	2.188	2.416	.797	430	120

U.N.F.

SIZE	WIDTH ACROSS FLATS (F)	WIDTH ACROSS CORNERS (C)	THICKNESS (T)	LBS. PER 1000 PCS.	CARTON QUANTITY
1/4 - 28	.438	.488	.203	5	10000
5/16 - 24	.500	.557	.250	8	7000
3/8 - 24	.562	.628	.266	10	6000
7/16 - 20	.625	.698	.313	13	4000
1/2 - 20	.750	.840	.313	20	2000
9/16 - 18	.875	.982	.359	35	1500
5/8 - 18	.938	1.051	.391	39	1500
3/4 - 16	1.062	1.191	.406	52	1000
7/8 - 14	1.250	1.403	.469	80	700
1 - 14	1.438	1.615	.547	140	400
1 1/8 - 12	1.625	1.826	.641	190	250
1 1/4 - 12	1.812	2.038	.734	270	200
1 3/8 - 12	2.000	2.249	.790	330	175
1 1/2 - 12	2.188	2.416	.797	430	120

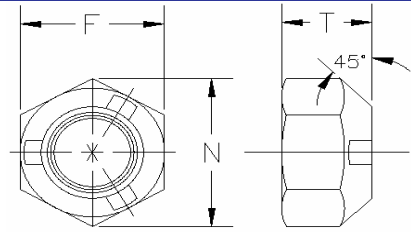
Quality, Price and Service, We Hold It All Together



STELFAST[®] INC.

ALL METAL LOCKNUTS AUTOMATION STYLE—GRADE B ZINC & WAX

U.N.C.



SIZE	WIDTH ACROSS FLATS (F)		THICKNESS (T)		LBS. PER 1000 PCS.	CARTON QUANTITY
	MAX.	MIN.	MAX.	MIN.		
1/4 - 20	0.4380	0.428	0.257	0.243	8.0	7000
5/16 - 18	0.5000	0.489	0.302	0.292	10.8	5000
3/8 - 16	0.5630	0.551	0.377	0.360	16.0	3500
7/16 - 14	0.6880	0.675	0.430	0.410	29.8	2000
1/2 - 13	0.7500	0.736	0.510	0.490	38.5	1400
9/16 - 12	0.8750	0.861	0.555	0.535	58.5	1000
5/8 - 11	0.9380	0.922	0.645	0.621	78.9	700
3/4 - 10	1.1250	1.088	0.750	0.702	120.0	500
7/8 - 9	1.3150	1.269	0.885	0.835	231.6	250
1 - 8	1.5020	1.450	0.985	0.935	278.0	200

U.N.F.

SIZE	WIDTH ACROSS FLATS (F)		THICKNESS (T)		LBS. PER 1000 PCS.	CARTON QUANTITY
	MAX.	MIN.	MAX.	MIN.		
1/4 - 28	0.4380	0.428	0.257	0.243	8.0	7000
5/16 - 24	0.5000	0.489	0.302	0.292	10.8	5000
3/8 - 24	0.5630	0.551	0.377	0.360	16.0	3500
7/16 - 20	0.6880	0.675	0.430	0.410	29.8	2000
1/2 - 20	0.7500	0.736	0.510	0.490	38.5	1400
9/16 - 18	0.8750	0.861	0.555	0.535	58.5	1000
5/8 - 18	0.9380	0.922	0.645	0.621	78.9	700
3/4 - 16	1.1250	1.088	0.750	0.702	120.0	500
7/8 - 14	1.3150	1.269	0.885	0.835	231.6	250
1 - 14	1.5020	1.450	0.985	0.935	278.0	200

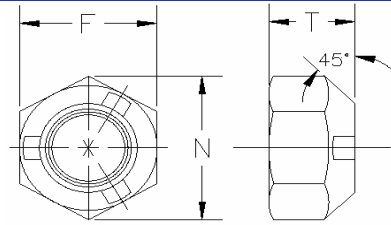
Quality, Price and Service, We Hold It All Together



STELFAST[®] INC.

ALL METAL LOCKNUTS AUTOMATION STYLE—GRADE C ZINC & WAX

U.N.C.



SIZE	WIDTH ACROSS FLATS (F)		THICKNESS (T)		LBS. PER 1000 PCS.	CARTON QUANTITY
	MAX.	MIN.	MAX.	MIN.		
1/4 - 20	0.4380	0.428	0.226	0.212	6.7	8000
5/16 - 18	0.5000	0.489	0.273	0.258	9.8	6000
3/8 - 16	0.5630	0.551	0.337	0.320	14.5	4000
7/16 - 14	0.6880	0.675	0.385	0.365	25.0	2200
1/2 - 13	0.7500	0.736	0.448	0.427	34.8	1600
9/16 - 12	0.8750	0.861	0.496	0.473	53.7	1000
5/8 - 11	0.9380	0.922	0.559	0.535	70.2	800
3/4 - 10	1.1250	1.088	0.665	0.617	115.0	500
7/8 - 9	1.3150	1.269	0.776	0.724	207.0	300
1 - 8	1.5020	1.450	0.887	0.831	260.0	200

U.N.F.

SIZE	WIDTH ACROSS FLATS (F)		THICKNESS (T)		LBS. PER 1000 PCS.	CARTON QUANTITY
	MAX.	MIN.	MAX.	MIN.		
1/4 - 28	0.4380	0.428	0.226	0.212	6.7	8000
5/16 - 24	0.5000	0.489	0.273	0.258	9.8	6000
3/8 - 24	0.5630	0.551	0.337	0.320	14.5	4000
7/16 - 20	0.6880	0.675	0.385	0.365	25.0	2200
1/2 - 20	0.7500	0.736	0.448	0.427	34.8	1600
9/16 - 18	0.8750	0.861	0.496	0.473	53.7	1000
5/8 - 18	0.9380	0.922	0.559	0.535	70.2	800
3/4 - 16	1.1250	1.088	0.665	0.617	115.0	500
7/8 - 14	1.3150	1.269	0.776	0.724	207.0	300
1 - 14	1.5020	1.450	0.887	0.831	260.0	200

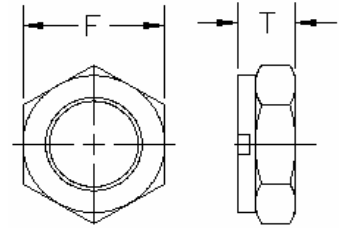
Quality, Price and Service, We Hold It All Together



STELFAST[®] INC.

COLLAR STYLE LOCKNUTS GRADE C PLAIN & PLATED

U.N.C.



SIZE	WIDTH ACROSS FLATS (F)		THICKNESS (T)		LBS. PER 1000 PCS.	CARTON QUANTITY
	MAX.	MIN.	MAX.	MIN.		
1 1/8 - 7	1.687	1.631	.999	.939	353.8	130
1 1/4 - 7	1.875	1.812	1.094	1.030	480.0	100
1 3/8 - 6	2.062	1.994	1.206	1.138	671.4	70
1 1/2 - 6	2.250	2.175	1.317	1.245	820.0	50
1 3/4 - 5	2.625	2.538	1.540	1.460	1400.0	35
2 - 4 1/2	3.000	2.900	1.763	1.675	2050.0	20
2 1/4 - 4 1/2	3.375	3.275	1.922	1.822	3170.0	20
2 1/2 - 4	3.750	3.650	2.141	2.041	4350.0	15

U.N.F.

SIZE	WIDTH ACROSS FLATS (F)		THICKNESS (T)		LBS. PER 1000 PCS.	CARTON QUANTITY
	MAX.	MIN.	MAX.	MIN.		
1 1/8 - 12	1.687	1.631	.999	.939	346.1	130
1 1/4 - 12	1.875	1.812	1.094	1.030	470.0	100
1 3/8 - 12	2.062	1.994	1.206	1.138	657.1	70
1 1/2 - 12	2.250	2.175	1.317	1.245	800.0	50
1 3/4 - 12	2.625	2.538	1.540	1.460	1314.3	35
2 - 12	3.000	2.900	1.763	1.675	1950.0	20
2 1/4 - 12	3.375	3.275	1.922	1.822	3170.0	20
2 1/2 - 12	3.750	3.650	2.141	2.041	4350.0	15

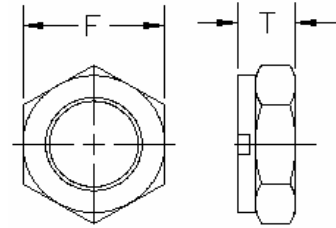
Quality, Price and Service, We Hold It All Together



STELFAST® INC.

THIN COLLAR STYLE LOCKNUTS GRADE C PLAIN & PLATED

U.N.C.



SIZE	WIDTH ACROSS FLATS (F)		THICKNESS (T)		LBS. PER 1000 PCS.	CARTON QUANTITY
	MAX.	MIN.	MAX.	MIN.		
5/8 - 11	0.938	0.922	0.387	0.363	44.6	1300
3/4 - 10	1.125	1.088	0.446	0.398	65.0	800
7/8 - 9	1.312	1.269	0.510	0.458	107.5	400
1 - 8	1.500	1.450	0.575	0.519	156.7	300
1 1/8 - 7	1.688	1.631	0.639	0.579	230.0	300
1 1/4 - 7	1.875	1.812	0.751	0.687	332.0	150
1 3/8 - 6	2.062	1.994	0.815	0.747	415.0	100
1 1/2 - 6	2.250	2.175	0.880	0.808	566.6	90

U.N.F.

SIZE	WIDTH ACROSS FLATS (F)		THICKNESS (T)		LBS. PER 1000 PCS.	CARTON QUANTITY
	MAX.	MIN.	MAX.	MIN.		
5/8 - 18	0.938	0.922	0.387	0.363	43.8	1300
3/4 - 16	1.125	1.088	0.446	0.398	63.75	800
7/8 - 14	1.312	1.269	0.510	0.458	105.0	400
1 - 14	1.500	1.450	0.575	0.519	160.0	300
1 1/8 - 12	1.688	1.631	0.639	0.579	225.0	200
1 1/4 - 12	1.875	1.812	0.751	0.687	320.0	150
1 3/8 - 12	2.062	1.994	0.815	0.747	400.0	100
1 1/2 - 12	2.250	2.175	0.880	0.808	544.4	90

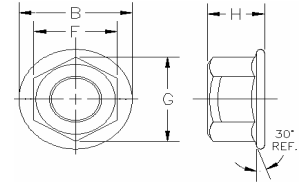
Quality, Price and Service, We Hold It All Together



STELFAST[®] INC.

FLANGE LOCKNUTS GRADE F PLAIN & PLATED

U.N.C.



SIZE	WIDTH ACROSS FLATS (F)		HEIGHT (H)	FLANGE DIAMETER (B)	LBS. PER 1000 PCS.	CARTON QUANTITY
	MAX.	MIN.	MAX.	MAX.		
12 - 24	0.4375	0.428	0.300	0.560	9	6000
1/4 - 20	0.4375	0.428	0.300	0.560	9	6000
5/16 - 18	0.5000	0.489	0.365	0.680	14	4000
3/8 - 16	0.5645	0.551	0.425	0.810	18	3000
7/16 - 14	0.6895	0.675	0.495	0.930	42	1500
1/2 - 13	0.7500	0.736	0.555	1.070	48	1200
5/8 - 11	0.9395	0.922	0.690	1.330	90	600
3/4 - 10	1.1270	1.088	0.825	1.585	175	600

GRADE G

U.N.C.

SIZE	WIDTH ACROSS FLATS (F)		HEIGHT (H)	FLANGE DIAMETER (B)	LBS. PER 1000 PCS.	CARTON QUANTITY
	MAX.	MIN.	MAX.	MAX.		
5/16 - 18	0.5200	0.489	0.365	0.680	18	3000
3/8 - 16	0.5645	0.551	0.425	0.810	25	2000
7/16 - 14	0.6895	0.675	0.495	0.930	48	1200
1/2 - 13	0.7520	0.736	0.555	1.070	59	1000
5/8 - 11	0.9395	0.922	0.690	1.330	115	500
3/4 - 10	1.1270	1.088	0.825	1.585	175	300

GRADE G

U.N.F.

SIZE	WIDTH ACROSS FLATS (F)		HEIGHT (H)	FLANGE DIAMETER (B)	LBS. PER 1000 PCS.	CARTON QUANTITY
	MAX.	MIN.	MAX.	MAX.		
5/16 - 24	0.5200	0.489	0.365	0.680	18	3000
3/8 - 24	0.5645	0.551	0.425	0.810	25	2000
7/16 - 20	0.6895	0.675	0.495	0.930	48	1200
1/2 - 20	0.7520	0.736	0.555	1.070	59	1000
5/8 - 18	0.9395	0.922	0.690	1.330	115	500
3/4 - 16	1.1270	1.088	0.825	1.585	175	300

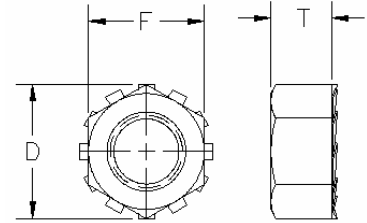
Quality, Price and Service, We Hold It All Together



STELFAST[®] INC.

K - LOCKNUTS ZINC PLATED

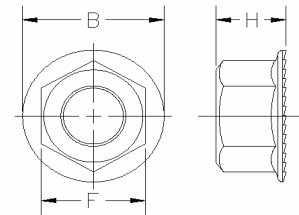
U.N.C.



SIZE	WIDTH ACROSS FLATS (F)	WASHER DIAMETER (D)	THICKNESS (T)	LBS. PER 1000 PCS.	CARTON QUANTITY
4 - 40	1/4	9/32	3/32	1.4	50000
6 - 32	5/16	11/32	7/64	2.0	25000
8 - 32	11/32	5/32	1/8	2.8	20000
10 - 24	3/8	13/32	1/8	3.3	17000
10 - 32	3/8	13/32	1/8	3.3	17000
1/4 - 20	7/16	37/64	3/16	6.1	10000
5/16 - 18	1/2	21/32	17/64	12.0	5000
3/8 - 16	9/16	21/32	21/64	17.0	3500

HEX SERRATED FLANGE NUTS CASE HARDENED ZINC PLATED

U.N.C.



SIZE	WIDTH ACROSS FLATS (F)	HEIGHT MAX. (H)	FLANGE DIAMETER MAX. (B)	LBS. PER 1000 PCS.	CARTON QUANTITY
1/4 - 20	7/16	15/64	19/32	9	5000
5/16 - 18	1/2	9/32	11/16	14	4000
3/8 - 16	9/16	11/32	3/4	18	3000
1/2 - 13	3/4	29/64	1	44	1200

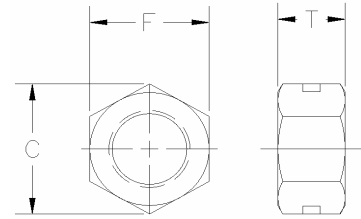
Quality, Price and Service, We Hold It All Together



STELFAST[®] INC.

REVERSIBLE (2 WAY) LOCKNUT ZINC AND WAX

U.N.C.



SIZE	WIDTH ACROSS FLATS (F)	WIDTH ACROSS CORNERS (C)	THICKNESS (T)	LBS. PER 1000 PCS.	CARTON QUANTITY
1/4 - 20	7/16	1/2	7/32	7/4	9000
5/16 - 18	1/2	9/16	17/64	11	6000
3/8 - 16	9/16	41/64	21/64	16	3500
7/16 - 14	5/8	25/32	3/8	28	2000
1/2 - 13	3/4	27/32	7/16	37	1500
9/16 - 12	7/8	1.00	31/64	58	1000
5/8 - 11	15/16	1 1/16	35/64	73	800
3/4 - 10	1 1/8	1 9/32	41/64	119	500
7/8 - 9	1 1/4	1 31/64	3/4	190	300
1 - 8	1 1/2	1 11/16	55/64	283	200

U.N.F.

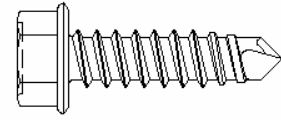
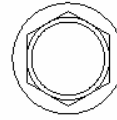
SIZE	WIDTH ACROSS FLATS (F)	WIDTH ACROSS CORNERS (C)	THICKNESS (T)	LBS. PER 1000 PCS.	CARTON QUANTITY
1/4 - 28	7/16	1/2	7/32	7/4	9000
5/16 - 24	1/2	9/16	17/64	11	6000
3/8 - 24	9/16	41/64	21/64	16	3500
7/16 - 20	5/8	25/32	3/8	28	2000
1/2 - 20	3/4	27/32	7/16	37	1500
9/16 - 18	7/8	1.00	31/64	58	1000
5/8 - 18	15/16	1 1/16	35/64	73	800
3/4 - 16	1 1/8	1 9/32	41/64	119	500
7/8 - 14	1 1/4	1 31/64	3/4	190	300
1 - 14	1 1/2	1 11/16	55/64	283	200

Quality, Price and Service, We Hold It All Together



STELFAST[®] INC.

**SELF DRILLING SCREWS
UNSLOTTED INDENTED
HEX WASHER HEAD
SCREW NO.'S 2 & 3 ZINC PLATED**



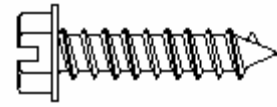
LENGTH UNDER HEAD	# 8 - 18		# 10 - 16		# 12 - 14		# 14 - 14	
	CTN QTY	LBS. PER 1000 PCS.	CTN QTY	LBS. PER 1000 PCS.	CTN QTY	LBS. PER 1000 PCS.	CTN QTY	LBS. PER 1000 PCS.
1/2	10000	3.2	8000	5				
5/8	10000	4.1	6000	5.5				
3/4	10000	4.5	6000	6	5000	7.6	3000	11.7
1	8000	5.5	5000	7.5	4000	9	3000	14.5
1 1/4	8000	6.8	5000	8.2	3500	10.6	3000	19
1 1/2	5000	7	5000	10	3500	12.5	2000	21.9
2	6000	9.3	3000	12	3000	19	2000	23
3					2000	26.8	1500	35.4

Quality, Price and Service, We Hold It All Together



STELFAST[®] INC.

**TAPPING SCREWS
SLOTTED INDENTED
HEX WASHER HEAD
TYPE-A & TYPE-AB ZINC PLATED**



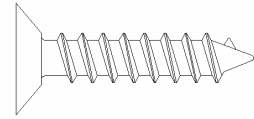
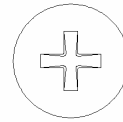
LENGTH UNDER HEAD	# 8-15 & # 8-18 3		# 10-15 & # 10-16		# 12-11 & # 12-14		# 14-10 & # 14-14	
	CTN QTY	LBS. PER 1000 PCS.	CTN QTY	LBS. PER 1000 PCS.	CTN QTY	LBS. PER 1000 PCS.	CTN QTY	LBS. PER 1000 PCS.
1/2	14000	3	10000	5				
5/8	11000	4	8000	5.4				
3/4	9500	4.5	7000	6	5500	8		
1	7000	5	5500	7	4300	9	3200	15
1 1/4	5500	6	4300	8	3500	11	2500	17
1 1/2	4500	7	3500	10	3000	13	2000	19
2			2500	12	1800	16	1500	24
2 1/2							1200	29
3							1000	33

Quality, Price and Service, We Hold It All Together



STELFAST[®] INC.

TAPPING SCREWS
FLAT PHLLIP HEAD
TYPE-A TYPE-AB
ZINC PLATED



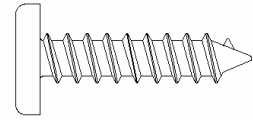
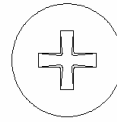
LENGTH UNDER HEAD	# 6-20		# 8-15 & # 8-18		# 10-12 & # 10-16		# 12-11 & # 12-14		# 14-10	
	CTN QTY	LBS. PER 1000 PCS.	CTN QTY	LBS. PER 1000 PCS.	CTN QTY	LBS. PER 1000 PCS.	CTN QTY	LBS. PER 1000 PCS.	CTN QTY	LBS. PER 1000 PCS.
1/2	26000	1.6	18000	2.5	13000	4				
5/8	22000	1.9	15000	3	1000	3.8				
3/4	18000	2	12000	3.5	9000	5	7000	6		
1	13000	3	9000	4	6500	6	5500	8	4000	11
1 1/4			6500	5	5000	7	4000	10	4000	13
1 1/2			5000	6	4000	9	3500	12	3500	16
2					2800	11	2500	15	1700	20
2 1/2									1200	28
3									1000	33

Quality, Price and Service, We Hold It All Together



STELFAST[®] INC.

TAPPING SCREWS
PAN PHLLIP HEAD
TYPE-A TYPE-AB
ZINC PLATED



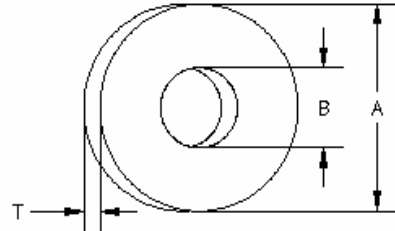
LENGTH UNDER HEAD	# 6-20		# 8-15 & # 8-18		# 10-12 & # 10-16		# 12-11 & # 12-14		# 14-10	
	CTN QTY	LBS. PER 1000 PCS.	CTN QTY	LBS. PER 1000 PCS.	CTN QTY	LBS. PER 1000 PCS.	CTN QTY	LBS. PER 1000 PCS.	CTN QTY	LBS. PER 1000 PCS.
1/2	21000	2	14000	3	10000	5				
5/8	17000	2.4	11000	4	8000	5.1				
3/4	14000	3	9500	4.5	7000	6	5500	8		
1	13000	4	7000	5	5500	7	4300	10	3200	14
1 1/4			5500	6	4300	8	3500	11	2500	16
1 1/2			4500	7	3500	10	3000	13	2000	18
2					2500	12	2000	16	1500	22
2 1/2									1200	26
3									3000	31

Quality, Price and Service, We Hold It All Together



STELFAST[®] INC.

U.S.S. FLAT WASHERS PLAIN, ZINC PLATED & GALVANIZED



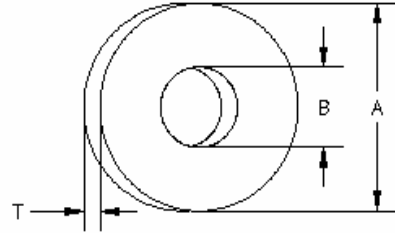
SIZE	OUTSIDE DI-AMETER (A)	INSIDE DIAMETER (B)	THICKNESS (T)	LBS. PER 1000 PCS.	APPROX. NUMBER IN 50LBS.
3/16	9/16	1/4	3/64	2.8	18100
1/4	3/4	5/16	1/16	6.2	7450
5/16	7/8	3/8	5/64	10.4	4500
3/8	1	7/16	5/64	13.4	3350
7/16	1 1/4	1/2	3/32	26.2	2050
1/2	1 3/8	9/16	7/64	36.6	1300
9/16	1 1/2	5/8	7/64	43.3	1100
5/8	1 3/4	11/16	9/64	77.5	650
3/4	2	13/16	9/64	100.0	455
7/8	2 1/4	15/16	5/32	139.2	325
1	2 1/2	1 1/16	5/32	170.4	265
1 1/8	2 3/4	1 1/4	5/32	199.7	225
1 1/4	3	1 3/8	5/32	236.6	190
1 3/8	3 1/4	1 1/2	5/32	176.6	150
1 1/2	3 1/2	1 5/8	11/64	351.6	130
1 5/8	3 3/4	1 3/4	11/64	402.5	115
1 3/4	4	1 7/8	3/16	498.3	100
2	4 1/2	2 1/8	3/16	628.0	80
2 1/4	4 3/4	2 3/8	7/32	826.0	61
2 1/2	5	2 5/8	15/64	961.0	50
2 3/4	5 1/4	2 7/8	1/4	1100.0	45
3	5 1/2	3 1/8	9/32	1300.0	39

Quality, Price and Service, We Hold It All Together



STELFAST[®] INC.

HARDENED FLAT WASHERS ASTM F436 PLAIN , ZINC PLATED & GALVANIZED



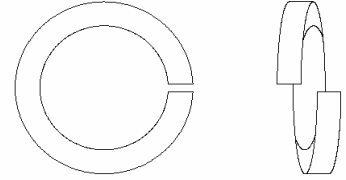
SIZE	OUTSIDE DIAMETER (A)	INSIDE DIAMETER (B)	THICKNESS (T)		LBS. PER 1000 PCS.	CARTON QUANTITY
			MAX.	MIN.		
3/8	13/16	13/32	.080	.051	7.0	8000
7/16	59/64	15/32	.080	.051	13	3600
1/2	1 1/16	17/32	.177	.097	18	2000
9/16	1 3/16	19/32	.177	.097	29	1600
5/8	1 5/16	11/16	.177	.122	32	1500
3/4	1 15/32	13/16	.177	.122	40	1200
7/8	1 3/4	15/16	.177	.136	64	750
1	2	1 1/8	.177	.136	82	600
1 1/8	2 1/4	1 1/4	.177	.136	105	400
1 1/4	2 1/2	1 3/8	.177	.136	136	300
1 3/8	2 3/4	1 1/2	.177	.136	163	300
1 1/2	3	1 5/8	.177	.136	190	200
1 5/8	3 1/4	1 3/4	.280	.177	321	175
1 3/4	3 3/8	1 7/8	.280	.177	.306	150
1 7/8	3 1/2	2	.280	.177	345	100
2	3 3/4	2 1/8	.280	.178	380	100
2 1/4	4	2 3/8	.340	.240	560	50
2 1/2	4 1/2	2 5/8	.340	.240	720	50
2 3/4	5	2 7/8	.340	.240	910	50
3	5 1/2	3 1/8	.340	.240	1040	50

Quality, Price and Service, We Hold It All Together



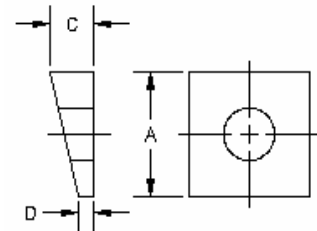
STELFAST[®] INC.

LOCK WASHERS MEDIUM SPLIT PLAIN , ZINC PLATED & GALVANIZED



SIZE	LBS. PER 1000 PCS.	CARTON QUANTITY
1/4	2.2	22500
5/16	3.8	12500
3/8	6.0	8000
7/16	9.0	5500
1/2	12.9	3750
9/16	17.7	2500
5/8	24.0	2000
3/4	39.5	1250
7/8	59.5	750
1	88.0	500
1 1/8	120.0	375
1 1/4	166.0	250
1 1/2	282.0	125

SQUARE BEVELED WASHERS MALEABLE IRON—TYPE A PLAIN & GALVANIZED



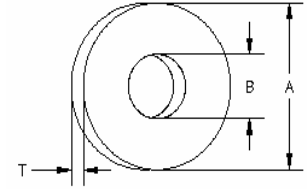
SIZE	ACROSS FLATS (A)	THICKNESS		LBS. PER 1000 PCS.	CARTON QUANTITY
		(C)	(D)		
3/8	1 1/4	11/32	5/32	85	500
1/2	1 1/4	11/32	5/32	85	500
5/8	1 1/2	13/32	5/32	131	300
3/4	1 1/2	15/32	7/32	154	250
7/8	2	9/16	7/32	340	100
1	2	9/16	7/32	310	100

Quality, Price and Service, We Hold It All Together



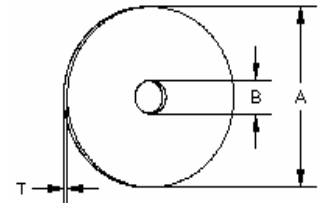
STELFAST[®] INC.

S.A.E. FLAT WASHER PLAIN & ZINC PLATED



SIZE	OUTSIDE DIAMETER (A)	INSIDE DIAMETER (B)	THICKNESS (T)	LBS. PER 1000 PCS.	NUMBER APPROX. IN 50 LBS.
1/4	5/8	9/32	1/16	4.5	11000
5/16	11/16	11/32	1/16	5.2	9600
3/8	13/16	13/32	1/16	7.2	7000
7/16	59/64	15/32	1/16	9.5	5250
1/2	1 1/16	17/32	3/32	18.3	2750
9/16	1 3/16	19/32	3/32	23.4	2250
5/8	1 5/16	21/32	3/32	27.7	1800
3/4	1 1/2	13/16	9/64	47.4	1050
7/8	1 3/4	15/16	9/64	63.0	800
1	2	1 1/16	9/64	83.0	600
1 1/8	2 1/4	1 3/16	9/64	109.0	450
1 1/4	2 1/2	1 5/16	5/32	160.0	315
1 1/2	3	1 9/16	3/16	240.0	210

FENDER WASHERS ZINC PLATED



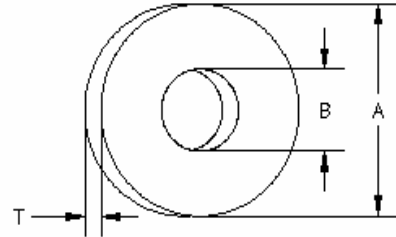
SIZE	OUTSIDE DIAMETER (A)	INSIDE DIAMETER (B)	THICKNESS (T)	LBS. PER 1000 PCS.	NUMBER APPROX. IN 50 LBS.
1/4	1	9/32	1/16	13.6	3700
1/4	1 1/4	9/32	1/16	21.9	2300
1/4	1 1/2	9/32	1/16	32.0	1575
5/16	1	11/32	1/16	11.5	2375
5/16	1 1/4	11/32	1/16	21.1	2375
5/16	1 1/2	11/32	1/16	30.9	1625
5/16	2	11/32	1/16	50.7	990
3/8	1	13/32	1/16	10.9	2750
3/8	1 1/4	13/32	1/16	20.1	2450
3/8	1 1/2	13/32	1/16	30.3	1650
1/2	2	17/32	1/16	54.4	925

Quality, Price and Service, We Hold It All Together



STELFAST[®] INC.

HARDENED FLAT WASHERS
U.S.S SERIES
ZINC PLATED



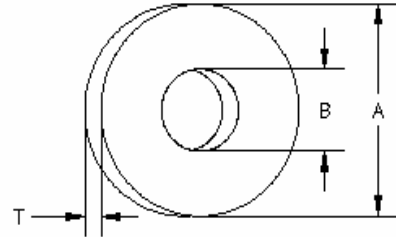
SIZE	OUTSIDE DIAMETER (A)	INSIDE DIAMETER (B)	THICKNESS (T)	LBS. PER 1000 PCS.	CARTON QUANTITY
1/4	3/4	5/16	1/16	6.7	7500
5/16	7/8	3/8	5/64	11.5	5000
3/8	1	7/16	5/64	15	3500
7/16	1 1/4	1/2	3/32	24.4	2500
1/2	1 3/8	9/16	7/64	39	1500
9/16	1 1/2	5/8	7/64	45.5	1100
5/8	1 3/4	11/16	9/64	77.5	700
3/4	2	13/16	9/64	110	500
7/8	2 1/4	15/16	5/32	153	350
1	2 1/2	1 1/16	5/32	188	300

Quality, Price and Service, We Hold It All Together



STELFAST[®] INC.

HARDENED FLAT WASHERS
S.A.E SERIES
ZINC PLATED



SIZE	OUTSIDE DIAMETER (A)	INSIDE DIAMETER (B)	MAX THICKNESS (T)	LBS. PER 1000 PCS.	CARTON QUANTITY
5/16	11/16	11/32	0.08	5.2	10,000
3/8	13/16	13/32	0.08	7.3	7000
7/16	59/64	15/32	0.08	13	3600
1/2	1 1/16	17/32	0.177	18.3	2500
9/16	1 3/16	19/32	0.177	32	2000
5/8	1 5/16	11/16	0.177	36	1500
3/4	1 15/32	13/16	0.177	45	1000
7/8	1 3/4	15/16	0.177	70	750
1	2	1 1/8	0.177	92	500

Quality, Price and Service, We Hold It All Together